

# Chickasaw

## National Wildlife Refuge Public Use Regulations 2021-2022

### Chickasaw NWR General Hunting Permit 2021-2022

Hunters must have a signed permit in their possession while participating in authorized refuge hunts. Quota hunt permits are issued separately. Applicable licenses and stamps are required.

I have read and understand these refuge regulations.

Hunter Signature (valid only when signed)

It is the hunter's responsibility to comply with all Regulations contained in this brochure, the 50 CFR Regulations, and State Regulations.

## Specific Hunting Regulations

All hunters must possess and carry a signed refuge permit (Public Use Regulations brochure). Big game harvested on the refuge must be checked in according to TWRA regulations. Chickasaw NWR must be specified as the location of harvest and all deer taken on the refuge must be counted toward the statewide bag limit.

Deer gun hunters may possess lead rifled slugs while hunting on the refuge.

Horses, mules, and burros are permitted only on refuge roads open to motorized traffic. We prohibit the use of horses and other animal conveyances from all other areas including fields, woods, waters, foot trails, and service roads/trails.

In accordance with the TWRA Emergency Flood Closure, hunting (except waterfowl hunting) may be cancelled when the Mississippi River stage reaches Flood Stage. Check [www.tnwildlife.org](http://www.tnwildlife.org) for potential closure notifications.

### Waterfowl

Ducks, Geese, Coots, and Mergansers may be hunted on Chickasaw NWR. State seasons and bag limits apply except legal shooting hours are 30 minutes before sunrise to 12 noon C.S.T. Hunters may access the refuge no more than two hours before legal sunrise. Only portable blinds may be used. All blinds, boats and decoys must be removed from the refuge by 1 pm C.S.T. daily. Youth hunting season same as statewide. Federal regulations allow only youth waterfowl hunters from 6-15 years of age to participate.

### Other Migratory Birds

Mourning dove, woodcock, and snipe. State season and bag limits apply except closed during all young sportsman deer, muzzleloader, and opening day of gun deer hunts through December 18, 2021. Hunters must only use and possess approved nontoxic shot.

### Small Game

Squirrel, rabbit, quail, raccoon, and opossum. State season and bag limits apply except squirrel, rabbit, and quail are closed during all young sportsman deer, muzzleloader, and opening day of gun deer hunts through December 18, 2021. Raccoon and opossum are open statewide except closed on Friday and Saturday nights during youth, gun, and muzzleloader deer hunts. Only approved nontoxic shot is allowed when using a shotgun.

Coyotes and beavers may be taken incidentally during scheduled hunts on the refuge. Legal methods of take include legal hunting equipment utilized during specified hunting seasons listed in this brochure. No bag limit. Trapping on Chickasaw NWR is prohibited.

### Big Game

*Deer - Archery, Youth Gun, Muzzleloader, and Gun Deer*

Seasons are same as State Season. No hunter quota. State bag limits apply. Harvested Deer Count in Statewide Bag Limit.

### Quota Turkey

First Hunt (Youth Hunt): April 9-10, 2022-One bearded turkey. Counts toward State limit.

Second Hunt: April 21-24, 2022-One bearded turkey. Counts toward State limit.

Third Hunt: April 28-May 1, 2022-One bearded turkey. Counts toward State limit.

Fourth Hunt: May 5-8, 2022-One bearded turkey. Counts toward State limit.

Permits: Quota turkey hunt permits required. See Quota Hunt Permit Application Procedures. Permits are limited to 25 for the youth hunt and 75 hunters per hunt for the regular turkey seasons. Successful applicants are eligible for only one hunt. Adult supervisors for the youth hunts are eligible to put in for the other turkey hunts.

Only persons drawn for the hunt are allowed to participate in the hunt (no hunt guests are permitted). Signed refuge permits and applicable State licenses are required. Hunters must check turkey in accordance to TWRA regulations and record Chickasaw NWR as the location of harvest. Hunters must only use and possess approved nontoxic shot.

### Quota Hunt Application Procedures

To apply for a quota hunt permit, type or plainly print your name, address, and phone number w/ area code on the front of a U.S. Postal Service Postcard. Unofficial postcards will be discarded prior to drawing. Send postcard in an envelope addressed to the Refuge Manager at Chickasaw NWR, 4343 Highway 157, Union City, TN 38261. Postcards for turkey hunts must be received during the month of January.

A total of up to four hunters may apply on the same postcard: one hunter's information on the front of the postcard and up to three additional hunter's information on the back. Indicate hunt preference (1st [Youth Hunt], 2nd, 3rd, or 4th) on the Turkey application. Submission of more than one postcard, except for the adult supervisor for the youth hunt, will result in disqualification of the applicant(s).

### Youth Hunters

Both the youth hunter and the supervising adult must apply together on the same postcard to be selected for a quota hunt. See Youth supervision section regarding supervision requirements.

### Fees

Applicants selected by drawing will be notified by mail to submit \$15.00 per person (cashiers check or money order only payable to the U.S. Fish and Wildlife Service) to receive a quota permit. Fees are not refundable and permits are not transferrable. Of funds collected, 80% are applied to defraying the administrative cost of the hunt while the remainder is deposited into the Migratory Bird Conservation Fund.

### Specific Fishing Regulations

Fishing is permitted from legal sunrise to legal sunset (Central Time) on Chickasaw NWR (see map for specific locations and dates of closures).

Fishing is allowed with pole and line or rod and reel only. Bow and arrows or a gig may be used to take non-game fish on refuge waters. Possession of unauthorized fishing gear, including trotlines, limblines, juglines, yo-yo's, nets, spears, and snag hooks is prohibited on Chickasaw NWR.

Frogging and turtling on Chickasaw NWR is prohibited. Persons must comply with all applicable State fishing and boating regulations while on the refuge. A valid Tennessee Fishing License is required.

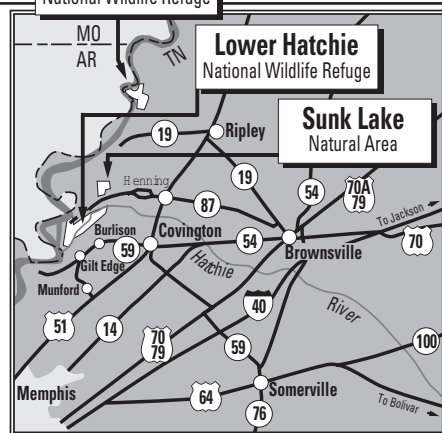
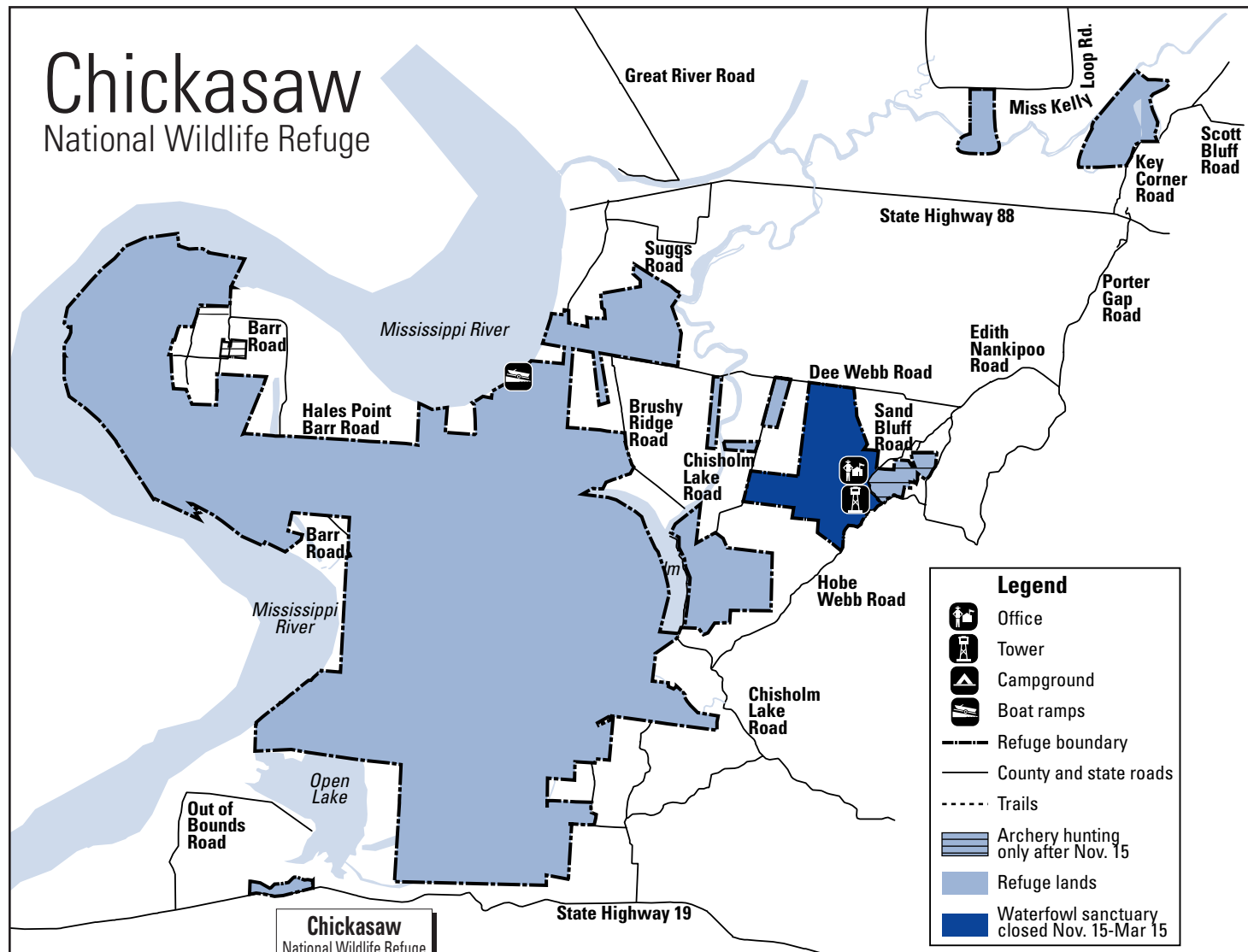
Chickasaw National Wildlife Refuge  
1505 Sand Bluff Road  
Ripley, TN 38063  
731/635 7621  
<https://www.fws.gov/refuge/chickasaw/>

U.S. Fish & Wildlife Service  
1 800/344 WILD  
<https://www.facebook.com/West-TennNWR/>

May 2021



To:



Chickasaw National Wildlife Refuge is one of over 560 National Wildlife Refuges. The refuge was established to provide essential habitat for migratory birds in the Lower Mississippi Valley. The U.S. Fish and Wildlife Service administers the Refuge System and is responsible for conserving, protecting, and enhancing the Nation's fish and wildlife populations and their habitats for the continuing benefit of people.

The provisions listed below supplement the general regulations which govern public use on wildlife refuge areas as set forth in Title 50, Code of Federal Regulations. When permitted, hunting, fishing and other public uses will be in accordance with applicable State laws unless otherwise listed.

## General Provisions and Access Regulations

### Access

By law, National Wildlife Refuges are closed to all recreational activities unless expressly permitted. Hunting, fishing, and certain other recreational uses are permitted on most areas of the refuge. The refuge is a Day Use Area Only. The refuge is closed from legal sunset to legal sunrise with the exception of legal hunting activities. We allow hunters to access the refuge no more than two hours before legal sunrise to no more than two hours after legal sunset, with the exception of raccoon and opossum hunters. We allow access to raccoon and opossum hunters from legal sunset to legal sunrise. Contact the Refuge Manager for current regulations and authorized activities.

### Drones

Drones are prohibited.

### Vehicles

Only legally licensed vehicles are allowed on maintained refuge roads and parking areas. ATV's, UTV's, and off-road motorized vehicles are prohibited. Airboats, Jet Skies, and Hovercraft are prohibited.

Parking as to block travel through refuge access roads, gates and trails is prohibited.

### Mobility Impaired Access

Most refuges are universally accessible to the disabled. Persons with disabilities are encouraged to participate in refuge hunts and other activities. Contact the Refuge Manager for guidelines and regulations.

### Roads

Roads may be closed at any time due to adverse weather conditions or management needs. Vehicles must remain on established roads as indicated on the map on this leaflet. Vehicles may be parked alongside open roads in a manner that will not interfere with the normal flow of traffic.

Avoid driving on refuge roads during wet conditions as damage to the roads will result.

### Closed Areas

Designated areas are closed to hunting, fishing, and all public access during fall and winter months to provide resource protection (see map for specific locations and dates of closures). Other areas may be closed for special management or safety reasons. All refuge access is prohibited from legal sunset to sunrise unless specifically authorized by the Refuge Manager.

### Camping and Fires

Camping and fires are prohibited except during the refuge small and big game hunts in designated areas only. All litter must be removed from the refuge.

### Boats

Boats used for any activity must be removed from the refuge daily. All State boating regulations apply.

### Firearms

Persons possessing, transporting, or carrying firearms on National Wildlife Refuges must comply with all provisions of state and local law. Persons may only use (discharge) firearms in accordance with refuge regulations (50 CFR 27.42 and specific refuge regulations in 50 CFR Part 32).

Carrying, possessing, or discharging of fireworks, or explosives on National Wildlife Refuges is prohibited.

The use or possession of air guns, spears, or similar weapons on National Wildlife Refuges is prohibited.

### Dogs

Dogs are permitted for small game and migratory bird hunting. All dogs are required to wear a collar displaying the owners name, address, and telephone number.

### Refuge/Cultural Resources

All government property including natural, historic, and archaeological features are protected by Federal Law. Searching for or removal of objects of antiquity or other value is strictly prohibited.

### Monitoring Devices

The use of electronic or photographic trail monitoring devices on Chickasaw NWR is prohibited.

### Alcohol

The use or possession of alcoholic beverages is prohibited while on refuge lands and waters.

### Bait

The use or possession of bait, or hunting over bait is strictly prohibited. Baiting means the direct or indirect placing, exposing, depositing, or scattering of any salt, grain, powder, liquid, or other feed substance to attract game.

### Tree Stands and Tree Steps

All tree stands must be removed from the refuge daily. The use of screw in tree steps, nails, wire, screws, or bolts to climb a tree or to attach a tree stand to a tree, or hunting from a tree into which a metal object has been driven is prohibited.

### Tree Marking

It is prohibited to mark any tree or other refuge feature with paint or similar substance. All flagging tape and other marking materials must be removed at the end of the hunt day.

### Brush and Tree Removal/Clearing

The cutting of holes, lanes, or any other manipulation of the vegetation (e.g. cutting of bushes and trees, mowing, herbicide use, and other actions) is strictly prohibited. The possession of saws, machetes, axes or other tools for cutting vegetation is prohibited.

### Youth Supervision

Youth hunters 6-16 years of age may participate. Youth hunters must be accompanied by an adult, 21 years of age or older, who must remain in a position to take immediate control of the hunting device and must also comply with fluorescent orange regulations, as specified for legal hunters. No more than two youth hunters per adult. No more than one youth hunter per adult during big game hunting activities.

### Nontoxic Shot

All hunters using shotguns for hunting on Chickasaw NWR must use and possess ammunition containing approved nontoxic shot only. The possession of lead shot is prohibited.

### Hunter Education

Hunters born after 01/01/69, must possess proof that they have successfully completed a hunter education course. All hunters are encouraged to complete a hunters safety course.