

Washita

National Wildlife Refuge Hunting and Fishing Regulations



Welcome

Washita National Wildlife Refuge was established in 1961 to serve as a wintering and migratory stopover site for waterfowl and other migratory birds. The refuge is located in Custer County along U.S. Highway 33 near the towns of Butler and Hammon. The refuge includes 8,075 acres of grasslands, woodlands, farm fields, and open water that provides habitat for many resident and migratory species of wildlife. The refuge's mixed grass plains of west-central Oklahoma is superimposed on the upper reaches of Foss Reservoir.

Accessibility

Equal opportunity to participate in and benefit from programs and activities of the U.S. Fish and Wildlife Service is available to all individuals regardless of physical or mental ability. For more information please contact the U.S. Department of the Interior, Office of Equal Opportunity, <https://www.doi.gov/pmb/eeo/public-civil-rights>.

An accessible hunting blind is available for waterfowl and sandhill crane hunters. Contact the refuge for guidelines to obtain special access.

Firearms

Persons possessing, transporting, or carrying firearms on National Wildlife Refuge System lands must comply with all provisions of State and local law. Persons may only use (discharge) firearms in accordance with refuge regulations (50 CFR 27.42 and specific refuge regulations in 50 CFR Part 32).

Vehicles

All vehicles must remain on existing roads or in designated parking areas. Blocking gates or roadways is prohibited. All-terrain vehicles (ATVs) are prohibited.

Boats

Boats are allowed on refuge waters from March 15 – October 14. We do not allow boats and other flotation devices on refuge waters from October 15 – March 14. Use caution when navigating refuge

waters. Numerous submerged tree stumps exist in shallow waters and river currents can be hazardous. Swimming is not allowed in refuge waters. Jet-ski/ personal watercraft, water skiing, knee boarding, wakeboarding, tubing, and all other water sports are prohibited on refuge waters. Boats may not be beached on shores located within the closed areas of the refuge. Please see map for closed areas.

Hunting and Fishing Regulations

Hunting and fishing regulations are designed to provide safe recreational opportunities through wise use of renewable wildlife resources. Hunting and fishing are permitted in accordance with Federal regulations governing public use on National Wildlife Refuges as set forth in Title 50 of the Code of Federal Regulations.

Hunting and fishing will be in accordance with applicable State of Oklahoma regulations subject to the conditions stated below.

Access

WHEN: Fishing is permitted on the refuge in designated areas year-round, and by boat from March 15–October 14.

Hunting is permitted on the refuge in designated areas seasonally (see map for specific locations and closures). Waterfowl hunters are allowed to access the refuge 2 hours prior to legal shooting hours and must leave the field by 12:00 pm.

WHERE: Parking is available at refuge recreation areas. Hunters and anglers may access hunting and fishing areas only from designated parking areas.

Harvest Reporting

Requirements in accordance with State of Oklahoma Hunting Regulations.

Hunt Type	Season Dates	Hunt Areas	Other Regulations
White-tailed Deer	Deer hunting is available through the Oklahoma Department of Wildlife Conservation (ODWC) Controlled Hunts Program. The number of hunters and bag limits are determined by the refuge annually based on current biological data. More information on controlled hunts is available at www.wildlifedepartment.com .	Designated refuge lands determined prior to each hunt.	State permit is required. One antlerless white-tailed deer.
Turkey	Turkey hunting is available through the Oklahoma Department of Wildlife Conservation (ODWC) Controlled Hunts Program. The number of hunters and bag limits are determined by the refuge annually based on current biological data. More information on controlled hunts is available at www.wildlifedepartment.com .	Designated refuge lands determined prior to each hunt.	State permit is required. One tom turkey.
Waterfowl (includes ducks and mergansers) and Sandhill Crane	The following State Seasons apply: Dark Geese, White-fronted Geese, Light Geese, Sandhill Crane, Ducks and Mergansers.	Specific farm fields as shown on the map.	Waterfowl and sandhill crane hunting is permitted on a first-come first-served basis on specific farm fields. Waterfowl and sandhill crane hunting is allowed on selected weekends and Wednesdays during the State Waterfowl Season and closed during the refuge deer hunts. Shotgun only.
Rabbit	State seasons apply.	Designated areas of the refuge.	Rabbit hunting is allowed in designated areas of the refuge with closures during the refuge deer hunts.
Quail	State seasons apply.	Designated areas of the refuge.	Quail hunting is closed during the refuge deer hunts.
Dove	State seasons apply.	Designated areas of the refuge.	Dove hunting is closed during the refuge deer hunts.

Harvest: Follow state regulations except for one antlerless white-tailed deer and one tom turkey. State hunting and fishing regulations, seasons, shooting hours, bag limits, and license requirements apply to all hunting on the Refuge. Hunters may possess only federally approved non-toxic shotgun ammunition while in the field.

Washita National Wildlife Refuge
 20834 E 940 Rd Butler, OK 73625
 580-664-2205
washita@fws.gov
<http://www.fws.gov/refuge/washita>
 July 2022



Prohibited Activities

- Littering, dumping garbage, waste or household items.
- Possession of alcoholic beverages and controlled substances while hunting.
- Whole fish or parts of fish may not be left at recreation areas.
- Release of wild or domestic animals.
- Baiting or hunting over bait, salt, or any attractant other than hunting scents.
- Spotlighting—artificial light may not be used to locate wildlife.
- Taking of wildlife, antlers, mushrooms, or plants (including cutting trees or brush) unless authorized.
- Searching for or removing any object of archaeological or historical significance including arrowheads, pottery, or other artifacts.
- Marking trails with paint or leaving flagging tape, ribbons, or trail tacks.
- Blocking gates, or roadways with vehicles.
- Camping and fires.
- Hunting from a tree stand of any kind.
- Use of scouting cameras.
- Target practice.
- The use or possession of crossbows, bows and arrows, air guns, spears, gigs, and other weapons unless authorized.
- All-terrain vehicles.
- Horses or mules.

Signs and Boundaries

Please respect the following signs:

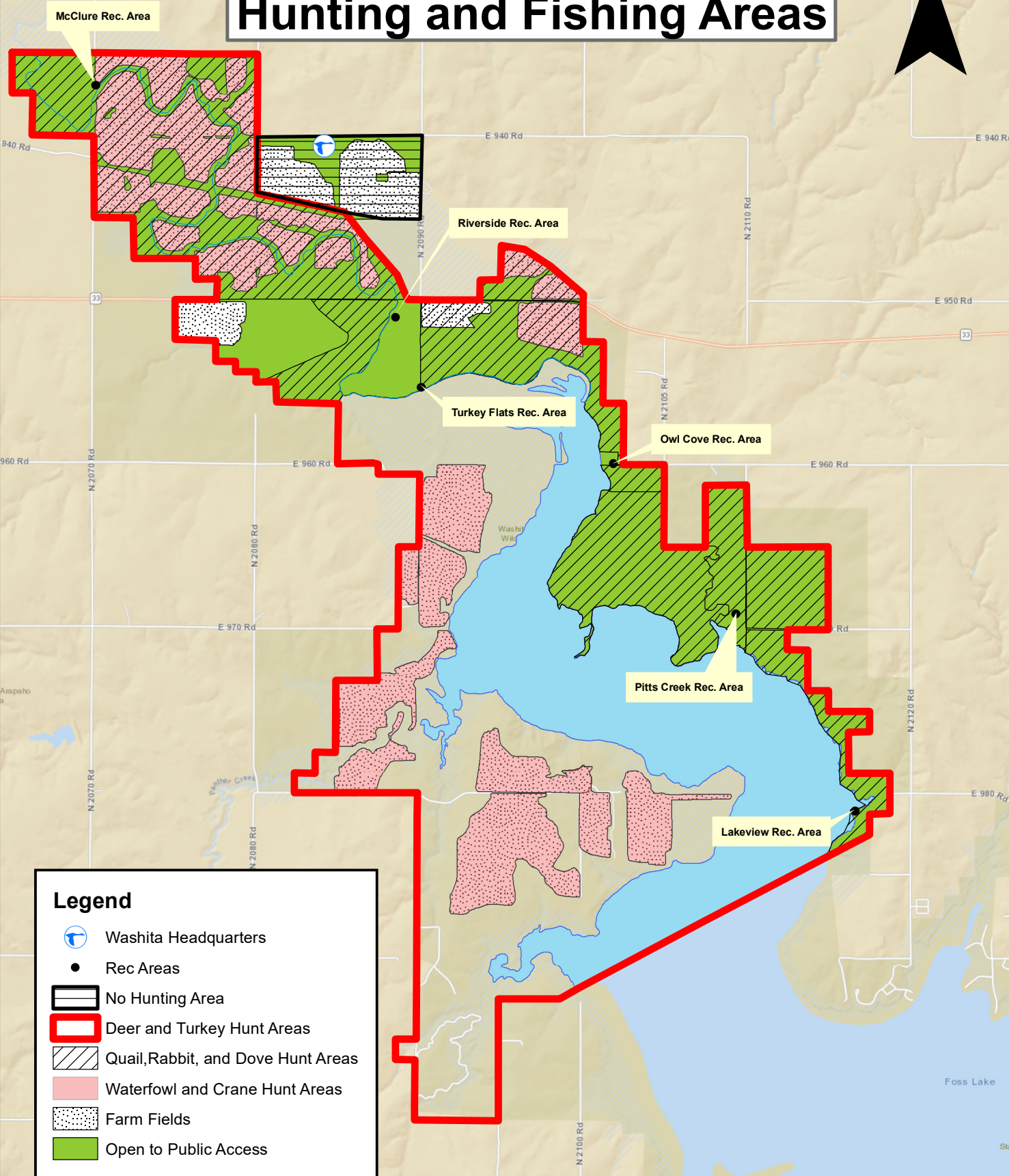
- No vehicles: All Traffic prohibited
- Parking area: Designated areas to park while hunting and fishing

Applies to the area located behind the sign:









- Refuge Boundary: Entry permitted in accordance with refuge regulations
- Closed Area: All entry prohibited
- No Hunting Zone: Hunting, weapons, and game retrieval prohibited

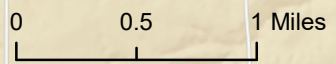


Washita NWR Hunting and Fishing Areas



Legend

-  Washita Headquarters
-  Rec Areas
-  No Hunting Area
-  Deer and Turkey Hunt Areas
-  Quail, Rabbit, and Dove Hunt Areas
-  Waterfowl and Crane Hunt Areas
-  Farm Fields
-  Open to Public Access



Sources: Esri, HERE, Garmin, USGS, Intermap, INCREMENT P, NRCan, Esri Japan, METI, Esri China (Hong Kong), Esri Korea, Esri (Thailand), NGCC, (c) OpenStreetMap contributors, and the GIS User Community