

Wapack National Wildlife Refuge

50th Anniversary - October 15 2022

Welcome to Wapack National Wildlife Refuge — one of more than 560 national wildlife refuges administered by the U.S. Fish and Wildlife Service. Here, within the boundary of this 1625-acre refuge, visitors can participate in a number of fun, healthy outdoor activities, including hiking, photography, and more! The Wapack Trail is maintained in large part by volunteers, including Friends of the Wapack.

Many people visit the refuge specifically to hike its trails. The final four miles of the 21 mile-long Wapack Trail begins at the southern boundary, ascends and passes over the summit of North Pack Monadnock — affording beautiful views of the landscape — before descending and continuing north to the trailhead on Old Mountain Road in Greenfield (NH). A number of other trails — Ted's, Carolyn's, and the Cliff Trail — offer additional opportunities to experience the refuge and its wildlife. Visitors generally access refuge trails either from the parking lot on Old Mountain Road or from Miller State Park.



The summit provides picturesque views and a chance to rest!



For Your Safety: Trails pass through remote, mountainous terrain and are rated as moderate to difficult. Carry a map, compass, and/or a GPS and know how to use them. Because mountain weather can change suddenly, carry extra clothing and rain gear. Let someone know where you are going and when you plan to return. Finally, carry extra water and food.

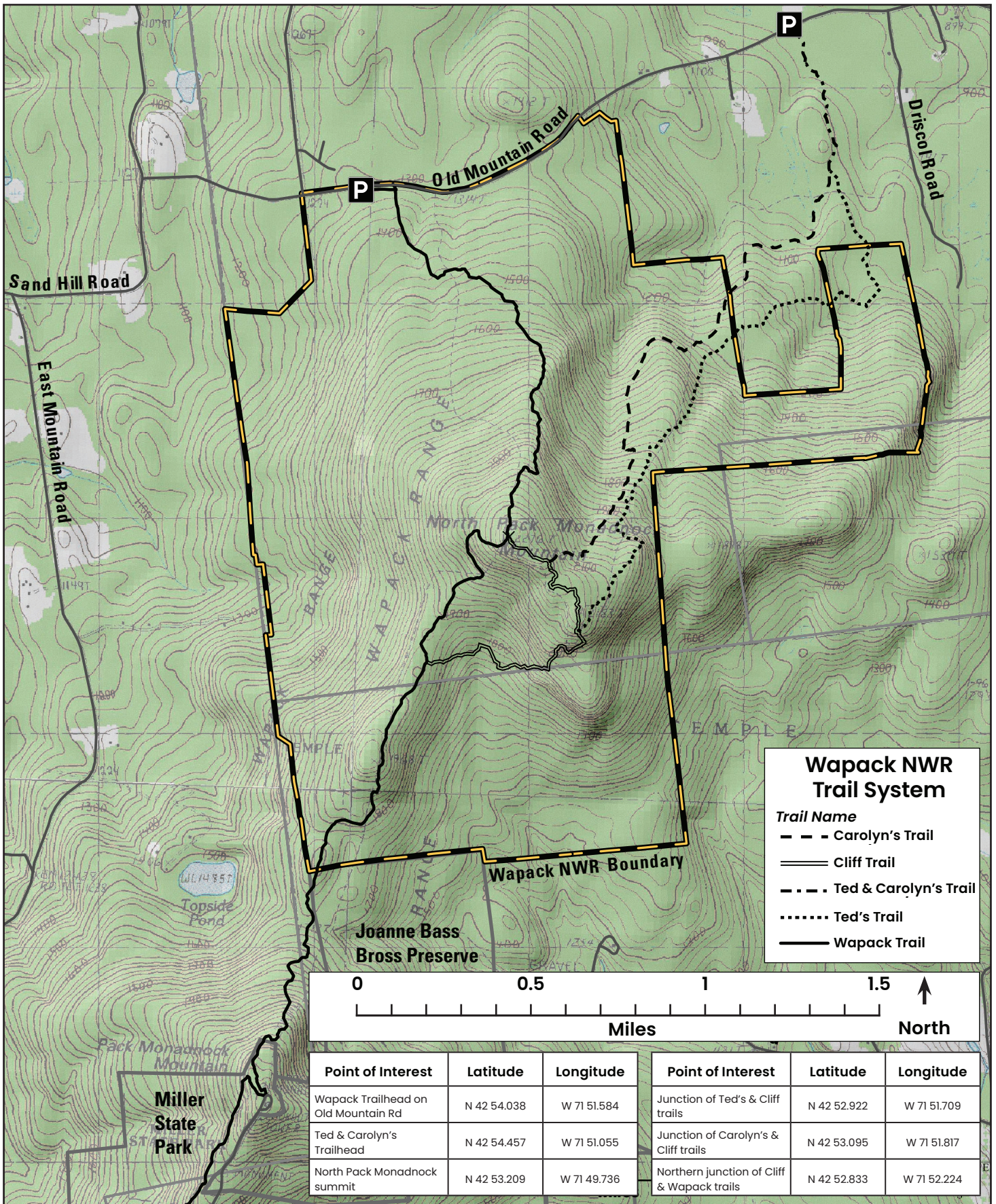
Wapack National Wildlife Refuge is open from sunrise to sunset. Following the rules and regulations will minimize disturbance to wildlife, and ensure a positive experience:

- Refuge trails are open to hiking; visitors must stay on designated trails
- Dogs are allowed, but must be leashed
- Cross country skiing and snowshoeing are allowed when there is adequate snow cover
- In season, berry picking is allowed along the Wapack Trail only
- Horseback riding and mountain biking are not allowed
- Hunting, fishing, trapping, and camping are prohibited



The trails feature shady forests, open vistas, and rocky outcrops.

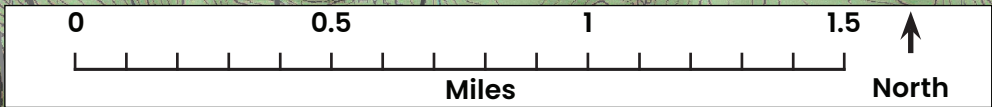
Wapack National Wildlife Refuge - Trail Map



Wapack NWR Trail System

Trail Name

- - - Carolyn's Trail
- Cliff Trail
- . - Ted & Carolyn's Trail
- Ted's Trail
- Wapack Trail



Point of Interest	Latitude	Longitude	Point of Interest	Latitude	Longitude
Wapack Trailhead on Old Mountain Rd	N 42 54.038	W 71 51.584	Junction of Ted's & Cliff trails	N 42 52.922	W 71 51.709
Ted & Carolyn's Trailhead	N 42 54.457	W 71 51.055	Junction of Carolyn's & Cliff trails	N 42 53.095	W 71 51.817
North Pack Monadnock summit	N 42 53.209	W 71 49.736	Northern junction of Cliff & Wapack trails	N 42 52.833	W 71 52.224



Questions? Call 978-465-5753 or visit us online at fws.gov/refuge/wapack