

Leslie Canyon

National Wildlife Refuge Hunting Regulations



Welcome

Leslie Canyon National Wildlife Refuge was established in 1988 under the authority of the Fish and Wildlife Act of 1956 and the Endangered Species Act of 1973. Specifically, to protect two of the eight native fish species of the Río Yaqui watershed, the Yaqui chub (*Gila purpurea*) and the Yaqui topminnow (*Poeciliopsis sonoriensis*). The 2,765-acre refuge is 17.5 miles north of the international border with Mexico in southeast Arizona's Cochise County.

Accessibility

Equal opportunity to participate in and benefit from programs and activities of the U.S. Fish and Wildlife Service is available to all individuals regardless of physical or mental ability. For more information, please contact the U.S. Department of the Interior, Office of Equal Opportunity, <https://www.doi.gov/pmb/eo/public-civil-rights>.

Safety

At any time, hunters may encounter visitors engaged in other activities. Hunters should be mindful of other user groups.

Firearms

Persons possessing, transporting, or carrying firearms on National Wildlife Refuge System lands must comply with all provisions of State and local law. Persons may only use (discharge) firearms in accordance with refuge regulations (50 CFR 27.42 and specific refuge regulations in 50 CFR Part 32).

Vehicles

Licensed motor vehicles are permitted only on Leslie Canyon Road within the refuge.

Access

Hunters may only access the refuge during daylight hours: sunrise to sunset. Hunters must park in the designated parking area, as identified on the map below, or responsibly along road side to access the refuge for hunting.

During inclement weather, four-wheel drive high clearance vehicles are recommended.

Hunting and Fishing Regulations

Hunting and fishing regulations are designed to provide safe recreational opportunities through wise use of renewable wildlife resources. Hunting and fishing are permitted in accordance with Federal regulations governing public use on National Wildlife Refuges as set forth in Title 50 of the Code of Federal Regulations."

Hunting and fishing will be in accordance with applicable State of Arizona regulations subject to the conditions stated below.

Hunter Sign-In

All hunters must sign in on the refuge visitor log, located at the parking area and refuge trail head (see map).

Harvest Reporting

In addition to meeting statewide harvest reporting, hunters must sign in on the refuge visitor log, for each day hunted, documenting success and species taken. The log is located at the trailhead-parking gate.

Tree Stands

Tree stands, elevated platforms, and ground blinds may be put up no earlier than the opening day of deer season and must be removed by the last day of deer season.

Hunter Permit Requirements

No hunting permit is required by the refuge. Hunters must have all applicable State and Federal licenses, tags, and stamps.

Prohibited Activities

- Entering the closed area south of Leslie Canyon Road
- Any discharge of a firearm except to take legal game
- Pneumatic weapons
- The use of dogs for hunting
- Trapping
- Falconry
- Pits, feeders, permanent blinds and stands; trail or scouting cameras; and baiting
- Possession of alcoholic beverages while hunting
- Camping and Fires
- Littering
- Searching for or removal of any natural items such as rocks, antlers, bison skulls, plants, historic, and archaeological features
- Marking or flagging any tree or other refuge feature with reflectors, paint, or other substance
- Hunting is prohibited within 200 yards of any public use facility

Leslie Canyon National Wildlife Refuge

7628 North Hwy 191

Douglas, AZ 85608

520-364-2104

fws.gov/refuge/leslie_canyon/

In case of an emergency call 911

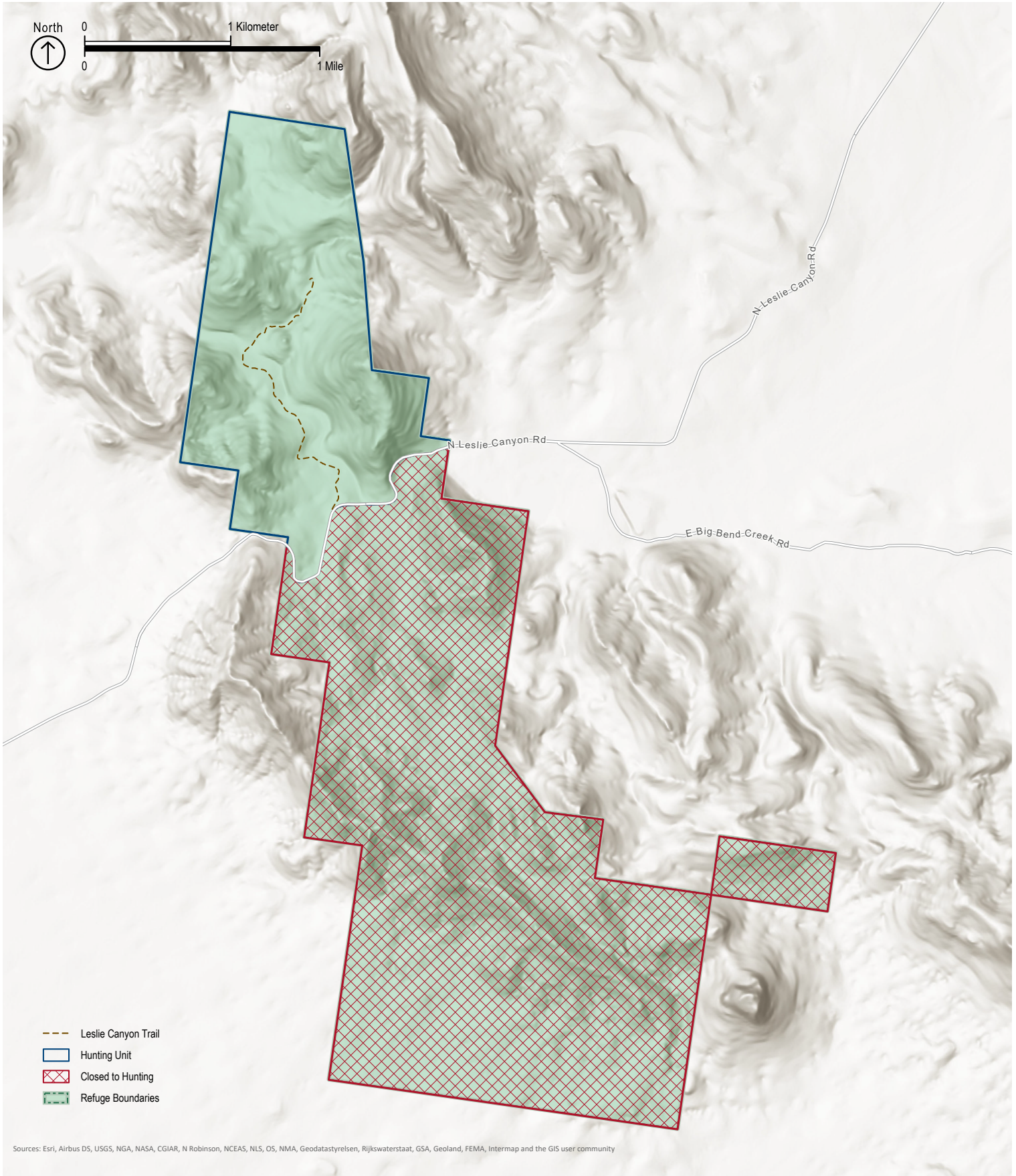
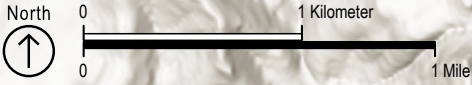
U.S. Fish & Wildlife Service

1-800-344-WILD

June 2022



Activity	Season	Hunt Area
Dove Mourning White-Winged Eurasian	September, November through January	Open Area North side of LC Road
Quail Gambel's Scaled	October through February	Open Area North side of LC Road
General Deer Mule White-tail	October through December	Open Area North side of LC Road
Archery Deer Mule White-tail	August, September, December, January	Open Area North side of LC Road
Youth Deer Mule White-tail	October	Open Area North side of LC Road
General Javelina	February	Open Area North side of LC Road
Archery Javelina	January	Open Area North side of LC Road
Youth Javelina	November, January through February	Open Area North side of LC Road
Black Bear	When state bear season overlaps with deer or javelina seasons August through December	Open Area North side of LC Road
Upland Game badger, bobcat, coati, coyote, gray fox, black-tailed jackrabbit, cottontail rabbit, raccoon, ring-tailed cat, skunks	When state seasons overlap with deer or javelina seasons August through February	Open Area North side of LC Road
State regulations, in conjunction with refuge prohibited activities, apply for bag limits and methods of take.		



Sources: Esri, Airbus DS, USGS, NGA, NASA, CGIAR, N Robinson, NCEAS, NLS, OS, NMA, Geodatastyrelsen, Rijkswaterstaat, GSA, Geoland, FEMA, Intermap and the GIS user community