



The Great American Hatchery Road Trip!

Central Edition



WELCOME TO Mississippi

There's nothing like cruising down the interstate, a fresh summer breeze blowing through the windows, the stereo blasting, and the anticipation of adventures ahead! The hardest part? Picking a destination! Don't worry, we've got you covered.

The National Fish Hatchery System has been improving recreational fishing and restoring aquatic species since 1872, so what better way to explore these cool sites than by starting with ones over 100 years old! Fish hatcheries have something for everyone in your group, so buckle those seatbelts and let's hit the road!

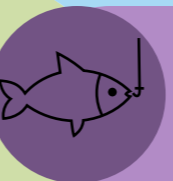


Private John Allen National Fish Hatchery

Private John Allen National Fish Hatchery, established in 1901, is a warmwater hatchery, raising fish that are important to Mississippi, the Lower Mississippi River Alluvial Valley, and the Gulf Coast, including alligator gar, lake sturgeon, Gulf Coast striped bass, Gulf Coast walleye, largemouth bass, and bluegill, just to name a few.



Elvis' song "Promised Land" is great for ANY road trip, but especially one that includes a stop in his hometown of Tupelo, Mississippi!



Fishing isn't allowed on hatchery grounds most days, but folks can wander the property and view fish in the ponds and raceways! The hatchery occasionally hosts fishing rodeos, so be sure to check their web page for events!



Walk the 0.17 Pond Loop Trail and follow the interpretive signs to learn about the hatchery, its history, and its critters. If you have energy left at the end of the day, head over to the Natchez Trace Parkway Visitor Center, roughly 8 miles from the hatchery!



Avian enthusiasts, this is the spot for you! Hang around on hatchery grounds for a chance to peep some mallard ducks, Canada geese, osprey, egrets, herons, various song birds, or mourning doves!



Love old homes and architecture? Swing by and check out the hatchery's historic Manager's Residence, which was restored and maintained by hatchery staff and volunteers! It's also listed on the National Register of Historic Places!



If you're a painter/interior decorator/architect check out the bullet above and head to the historic Manager's Residence. Set up an easel and paint or sketch your heart out, paying close attention to the building's details and unique characteristics!



MAP LEGEND

- The Angler
- The Explorer
- The Animal Lover
- The Historian
- The Artist



Turns out Tupelo, Mississippi, isn't ONLY famous for its amazing hatchery, it also happens to be the birthplace of Elvis Presley! Visit the King of Rock and Roll's childhood home or check out the small museum dedicated to his legacy.



Before you hit the road, be sure to check the hatchery's web page for additional activities and call ahead to check opening status.

Next Exit: → More Hatchery Fun!

- ### OTHER HATCHERIES IN THE CENTRAL SERIES
- ➡ D.C. Booth National Fish Hatchery - South Dakota
 - ➡ Neosho National Fish Hatchery - Missouri
 - ➡ Leadville National Fish Hatchery - Colorado
 - ➡ Saratoga National Fish Hatchery - Wyoming