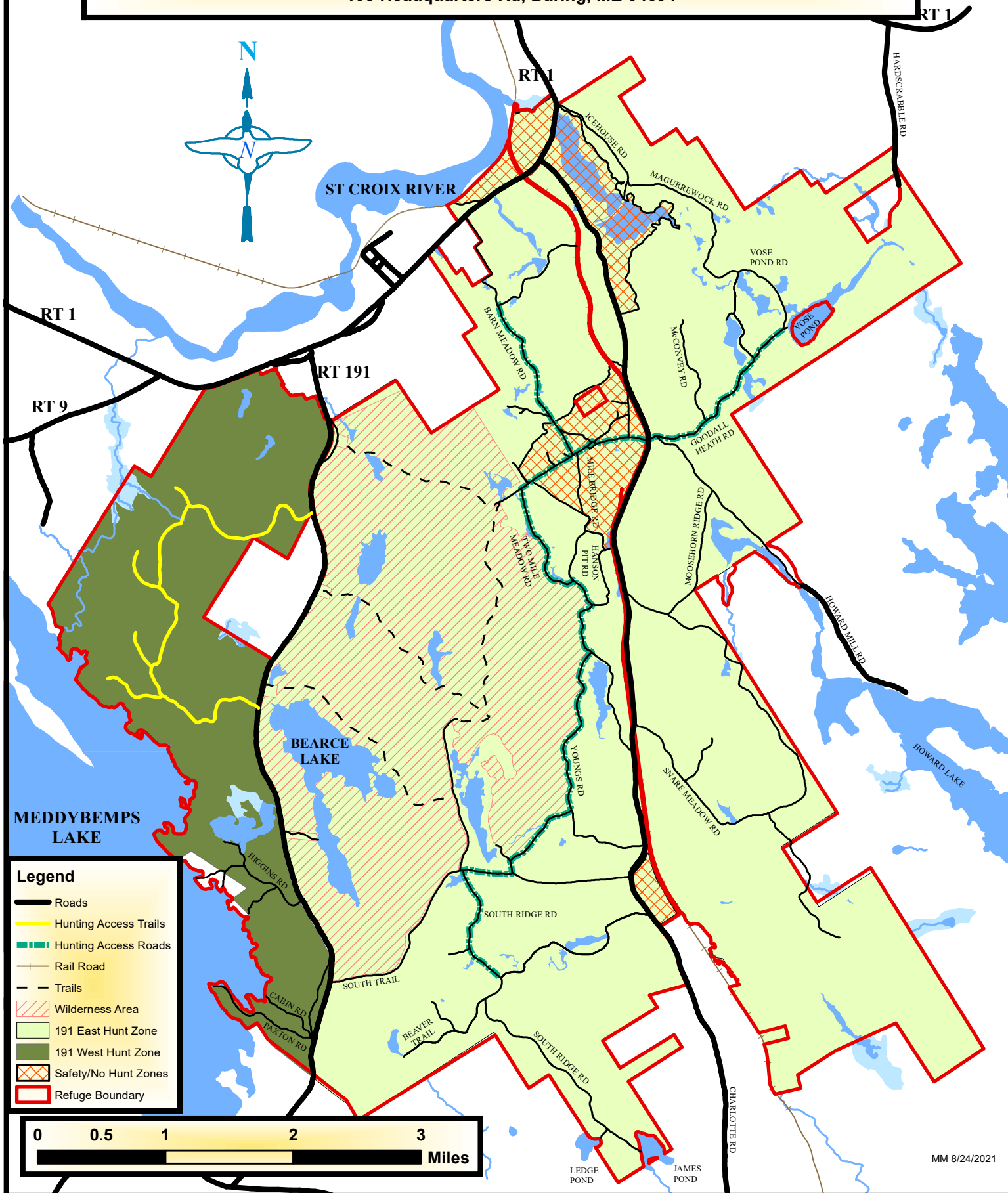


MOOSEHORN NATIONAL WILDLIFE REFUGE

Baring Division - Hunting Map

Phone 207-454-7161, E-mail: fw5rw_mhnwr@fws.gov
103 Headquarters Rd, Baring, ME 04694



Legend

- Roads
- Hunting Access Trails
- Hunting Access Roads
- Trails
- Rail Road
- Trails
- Wilderness Area
- 191 East Hunt Zone
- 191 West Hunt Zone
- Safety/No Hunt Zones
- Refuge Boundary

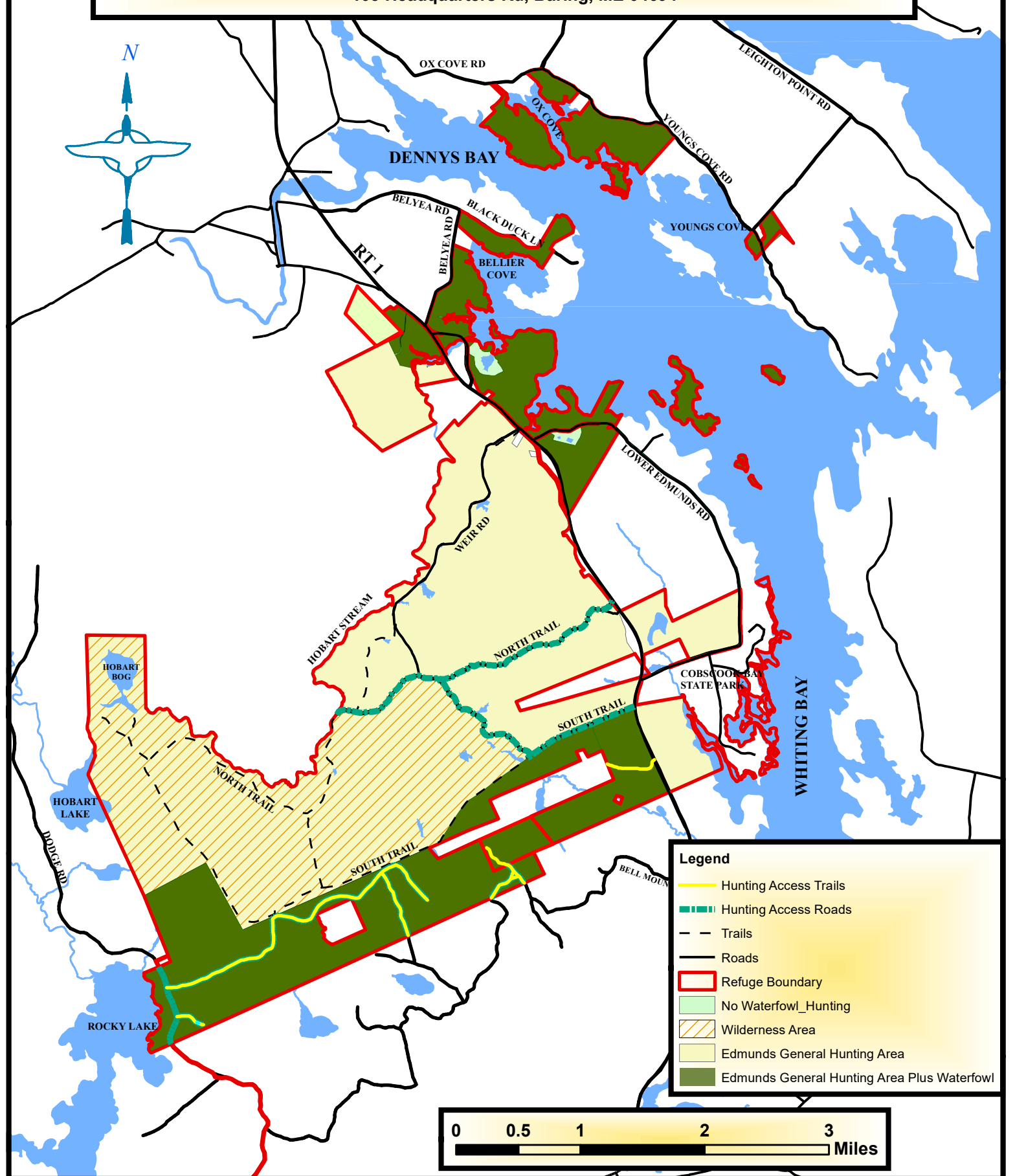


MM 8/24/2021

MOOSEHORN NATIONAL WILDLIFE REFUGE

Edmunds Division - Hunting Map

Phone 207-454-7161, E-mail: fw5rw_mhnwr@fws.gov
103 Headquarters Rd, Baring, ME 04694



Legend

- Hunting Access Trails
- Hunting Access Roads
- Trails
- Roads
- Refuge Boundary
- No Waterfowl_Hunting
- Wilderness Area
- Edmunds General Hunting Area
- Edmunds General Hunting Area Plus Waterfowl



JCW 9-14-05

HUNTING RULES & REGULATIONS

Taken From 50 CFR (Code of Federal Regulations)

Hunting Permit

Only persons possessing and carrying a current, signed, Moosehorn National Wildlife Refuge (NWR) Hunting Regulations Leaflet and the appropriate State hunting license(s) are authorized to hunt on the refuge. Regulations Leaflets and Hunt Maps are available online at <https://www.fws.gov/refuge/Moosehorn/> or from the Refuge office during normal business hours (8 a.m. to 4:30 p.m. Monday – Friday; closed on Holidays) or by mail (Moosehorn National Wildlife Refuge, 103 Headquarters Road, Baring, ME 04694).

License Requirements

All hunters on Moosehorn NWR must follow the licensing guidelines set by the State of Maine. Hunters must be in possession of their Refuge Hunting Regulations Leaflet and State hunting license at all times while hunting on the Refuge.

Hours

We allow hunters to enter the Refuge 1 hour before legal shooting hours, and they must exit the refuge by 1 hour past legal shooting hours, except for hunters pursuing raccoons and coyotes at night. Legal hunting hours follow State regulations.

Tree Stands/Blinds

The construction or use of permanent structures is prohibited on Refuge lands. Only temporary or portable stands, blinds, or ladders may be used. Any tree stand left overnight must have the name, address, phone number, and hunting license number of the owner clearly printed on it. Migratory game bird hunters are required to remove all portable or temporary blinds and decoys from the Refuge following each day's hunt.

Tree stands and blinds may not be set up prior to the first day of the archery deer season. You must remove all tree stands, blinds, and ladders from the Refuge on the last day of the muzzleloader deer season.

Trimming or cutting branches is prohibited. It is unlawful to drive a nail, spike, climbing screw, or other metal object into any tree or to hunt from any tree in which a nail, spike, climbing screw, or other metal object has been driven on the Refuge.

Non-toxic Shot

Hunters must use and possess only non-toxic shot while hunting migratory game birds and upland game.

Youth Hunting Days

We allow youth hunting during the state prescribed youth hunting days in accordance with State regulations and bag limits.

Baiting

Baiting or hunting over bait is prohibited on the Refuge for all species, including coyotes and bears.

Blaze Orange Requirements

Hunters must follow the State hunter orange clothing requirements.

Camping and fires

Camping and overnight parking are prohibited. Fires are prohibited. Please remove litter from the refuge.

Vehicles

Only legally licensed vehicles are allowed on Refuge roads. Vehicles are permitted only on public roads and Refuge access roads. Off-road vehicles including ATV's are prohibited.

Wilderness Area

We prohibit motorized or mechanized vehicles and equipment in designated Wilderness Areas. This includes all vehicles and items such as winches, pulleys, and wheeled game carriers. Animals harvested within the Wilderness Areas MUST be removed by hand without the aid of mechanical equipment of any type.

Alcoholic Beverages

The possession or use of alcoholic beverages while hunting is prohibited.

Dogs

You must register with the Refuge office prior to hunting black bear, bobcat, raccoon, or coyote with trailing dogs.

Artificial Light

The use of a spotlight or any other artificial light, including automotive headlights for the purpose of spotting, locating, or taking any animal is prohibited all year. Night coyote hunting during the appropriate season with proper equipment and permits is excepted from this rule.

Closed Areas to ALL Hunting

HUNTING IS NOT ALLOWED IN THE FOLLOWING AREAS: The South Magurrewock Area, the North Magurrewock Area, the Southern Gravel Pit, and the posted safety zone around the Refuge headquarters. The boundary of the Headquarters Area Safety Zone starts where the Snowmobile trail intersects with the Charlotte Road. The boundary follows the southern edge of the field, across the abandoned Maine Central Railroad grade, and follows the snowmobile trail in a northwesterly direction to Barn Meadow Road. It proceeds across Barn Meadow Road to the South Fire line, where it follows the South Fire line to Headquarters Road. It crosses the Headquarters Road and follows the fire line in a southeasterly direction to the Mile Bridge Road. It follows the Mile Bridge Road to the Hanson Pit Road, then along Hanson Pit Road leaving the road in an easterly direction at the site of the old crossing, across the abandoned Maine Central Railroad grade to the Charlotte Road. The line follows the Charlotte Road in a northerly direction to the point of origin. The other No-Hunt Zones are designated on the Hunt Map.

Moosehorn Game Sanctuary: Maine Department of Inland Fisheries and Wildlife has designated the abandoned railroad right of way from US Route 1 in Calais to the Baring-Charlotte Town Line as the Moosehorn Game Sanctuary. This area is closed to hunting and trapping.

WHAT, WHEN, AND WHERE CAN YOU HUNT?

White-tailed Deer

We allow hunting of white-tailed deer in accordance with State regulations, seasons, and bag limits. If you harvest a deer on the Refuge, you must notify the Refuge office in person or by phone within 24 hours.

When can you hunt Deer?

You may hunt both the Baring and Edmunds Divisions in accordance with the State prescribed deer seasons.

Where can you hunt Deer?

You may hunt both the Baring and Edmunds Divisions of Moosehorn NWR in accordance with the State prescribed seasons. See the "Closed Areas" section for areas that are closed to hunting.

Moose

You must have a valid State-issued moose permit for the appropriate State Wildlife Management District (WMD 27 or 28) to hunt moose. If you harvest a moose on the Refuge, you must notify the Refuge office in person or by phone within 24 hours.

When and where can you hunt moose?

You may hunt moose on the Edmunds Division and that part of the Baring Division that lies west of State Route 191 in accordance with the State prescribed moose seasons. See "Closed Areas" section for closed hunting areas.

Bear

We allow hunting of black bear in accordance with State regulations and bag limits. You must register with the Refuge office prior to hunting bear with trailing dogs. If you harvest a bear on the Refuge, you must notify the Refuge office in person or by phone within 24 hours.

When and where can you hunt bear?

- We allow bear hunting during the State Prescribed Season. You may hunt bear west of Route 191 on the Baring Division
- You may hunt bear east of Route 191 on the Baring Division with a BOW ONLY during the deer archery season.
- You may hunt bear east of Route 191 on the Baring division with a firearm during the deer firearms season.
- You may hunt bear on the Edmunds Division.
- See "Closed Areas" section for closed hunting areas.

Coyote

We allow hunting of coyote, in accordance with State regulations and bag limits, with the exception that harvested coyotes must be retrieved by the hunter. See other restrictions below. You must register with the Refuge office prior to hunting coyote with trailing dogs.

When and where can you hunt coyote?

- We allow coyote hunting from Oct. 1 to March 31, including night hunting on the Baring Division West of Route 191 and on the Edmunds Division. When night hunting coyotes, a State-issued night hunting permit is required, and hunters must be in possession of an electronic, hand-held, or mouth-operated calling device.
- You may hunt coyote east of Route 191 on the Baring Division during deer archery season with a bow only.
- You may hunt coyote east of Route 191 on the Baring Division during the firearms and muzzleloader deer seasons.

Upland Game

We allow hunting of bobcat, ruffed grouse, snowshoe hare, red fox, gray and red squirrel, raccoon, skunk, and woodchuck in accordance with State regulations and bag limits. See other restrictions below. You must register with the Refuge office prior to hunting bobcat, raccoon, or red fox with trailing dogs.

When and where can you hunt Upland Game?

- We allow hunting of the aforementioned upland game species during the State prescribed seasons. However, we prohibit hunting upland game on refuge lands from April 1 until the opening day of the State prescribed ruffed grouse hunting season.
- You may hunt upland game species on the Edmunds Division and that part of the Baring Division that lies west of State Route 191.
- See "Closed Areas" section for areas closed to hunting.

Migratory Game Bird Hunting

We allow hunting of ducks, geese, American woodcock, and Wilson's snipe in accordance with State and Federal regulations and bag limits. See also "Non-toxic Shot" section.

When and where can you hunt Migratory Game Birds?

- You may hunt migratory game birds during the State prescribed seasons.
- You may hunt American woodcock and Wilson's snipe on the Edmunds Division and that part of the Baring Division that lies west of State Route 191.
- You may hunt waterfowl (ducks and geese) in that part of the Edmunds Division that lies north of Hobart Stream and west of U.S. Route 1, and in those areas east of U.S. Route 1, and refuge lands that lie south of South Trail, and in that portion of the Baring Division that lies west of State Route 191.

- We prohibit waterfowl hunting in the Nat Smith Field and Marsh and Bill's Hill Field and Ponds on the Edmunds Division.

- See "Closed Areas" section for closed hunting areas.

Game Cameras and UAS

The use of game or trail cameras and drones (Unmanned Aircraft Systems) is prohibited on, or over refuge lands.

Signs Protect Visitors and Resources

Millions of people visit national wildlife refuges each year. The impact of human activity, if not regulated, can degrade these wildlands. Signs control recreational activities while protecting natural resources on the refuge. Please respect the following signs.



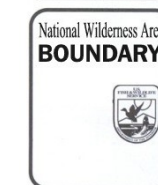
This sign delineates the refuge boundary. Entry is permitted only for authorized uses (hunting, fishing, sightseeing, etc.) in accordance with refuge regulations.



This area is closed to all entry. No hunting fishing or sightseeing is permitted. No roads or trails are open to the public.



This area is closed to all hunting. Firearms and archery equipment are strictly prohibited (see map).



This sign delineates the wilderness boundary. Entry is permitted only for authorized uses in accordance with refuge regulations. This is a sensitive area set aside to protect and preserve its natural conditions and which generally appears to have been affected primarily by the forces of nature, with the imprint of man's work unnoticeable.