

Dungeness National Wildlife Refuge Operations and Data

Requests A, H, and I - Dungeness National Wildlife Refuge Programs, Functions, Services, and Activities, and Associated Funding

Dungeness National Wildlife Refuge (Dungeness NWR) programs, functions, services, and activities fall into two broad categories: Public Use Management and Wildlife and Habitat Management.

Because Dungeness NWR consists of a well intact ecosystem, the majority of its programs, functions services, and activities focus on public use management. The goal is to encourage wildlife dependent recreation while reducing impacts to wildlife and habitat from human disturbance. We achieve this goal mainly through the use of volunteers, signage, printed materials, and maintenance of seasonal and year-round closed areas. These closed areas also help reduce impacts to cultural resources. Pre-pandemic, Washington Maritime National Wildlife Refuge Complex (NWRC or Complex) staff worked with over 180 volunteers that donated over 12,500 hours to programs and projects throughout the Complex.

An average of \$50,000 in entrance fees are collected at Dungeness NWR each year, as authorized by the Federal Lands Recreation Enhancement Act (16 U.S.C §§6801-6814). Eighty percent of the collected fees must be used to support visitor services at Dungeness NWR. The balance is available to support visitor services programs on other refuges. Temporary staff assisting with the visitor services program (currently a seasonal park ranger and a seasonal maintenance worker) are funded using these recreation fees. It is anticipated that recreation fee expenditures will continue to rise as post-pandemic operations increase and special project needs are funded (e.g., ~\$200,000 potentially needed for comfort station replacement). Expenditures in the two years prior to the COVID-19 pandemic averaged approximately \$80,000.

Recreation fee expenditures for last year and projected current year expenditures are:

- FY '21: \$5,050
- FY '22: \$72,000

The wildlife and habitat management program mainly focuses on maintaining existing ecosystem integrity through invasive species removal and minimizing human disturbance in sensitive areas. European green crab eradication has been the focus of this program since 2017.

Washington Maritime NWRC receives one base funding allocation supporting all six refuges within the Complex. The Complex does not receive appropriated funding or staffing assigned specifically to any particular refuge. Dungeness NWR does not receive its own staffing or operations funding allocation. Because funding is assigned to the Complex and not individual refuges, and there is not enough staff or funding to achieve all work identified in refuge Comprehensive Conservation Plans, it is necessary to continually reprioritize actions based on current conditions. Prioritization includes but is not limited to funding availability, staffing levels, safety issues and emergency needs, regional and national priorities, and biological needs and opportunities. Because of this need to share resources across refuges, we cannot guarantee that allocated funding will be available for any specific program at any particular refuge from year to year. It is anticipated that less allocated funding for operations at Dungeness NWR will be available in the future as restoration and monitoring of Federal and State listed endangered and

threatened species are expected to increase on other refuges within the Complex. Recreation fee funding will be relied upon to cover the majority of annual visitor services program expenses to allow the public use program at Dungeness NWR to continue at current levels.

The allocations of U.S. Fish and Wildlife Service (Service) appropriated funds for the Complex in the last two years are:

- FY '21: \$931,241
- FY '22: \$906,080

A portion of the above funding was received as annual grants from other Service programs for specific projects and is not part of the annual base funding allocations for the Complex. These funds cannot be presumed to be included in future years. Over the last two years grant funds totaled:

- FY '21: \$133,081 (\$25,200 for Dungeness NWR programs)
- FY '22: \$91,014

It is estimated that approximately 1/6 of the base funding allocation (annual allocation, not including grant funding) for Washington Maritime NWRC is expended in support of Programs, Functions, Services, and Activities on Dungeness NWR, in any given year. The portion of Complex funding estimated to have been spent in support of Dungeness NWR programs in the last two years is approximately:

- FY '21: \$133,027
- FY '22: \$135,844

A portion of the base funding allocation supports operations that are shared by the Complex (e.g., staffing, maintenance, and utilities). These Complex functions will continue to require funding at or near their current levels, even if Dungeness NWR programs, functions, services, and activities are conducted by the Tribe.

Table 1 - WMNWRC Budget Summary

	FY '21		FY '22	
	WMNWRC \$	Estimated Dungeness NWR \$	WMNWRC \$	Estimated Dungeness NWR \$
Appropriated Funds	\$931,241	\$158,227	\$906,080	\$135,844
WMNWRC Base	\$798,160	\$133,027	\$815,066	\$135,844
Project Funds	\$133,081	\$25,200	\$91,014	\$0
Recreation Fee Program	\$5,050	\$5,050	\$72,000	\$72,000
TOTAL	\$936,291	\$163,277	\$978,080	\$207,844

Request B - Position Descriptions, Vacancies, and Associated Funding

Full-time permanent staff are responsible for projects throughout Washington Maritime NWRC and funded through an annual base salary allocation. Temporary positions are funded using a combination of grants, recreation fees, and refuge operation funds, as available. A brief description of each position and an organizational chart are provided below. Full position descriptions have been provided separately.

Full-time Permanent Employees**Project Leader (position description # S000354)**

Provides decision-making, direction, supervision, and management for the six refuges in the Complex and the Complex employees. The project leader ensures programs follow policy and law.

Deputy Project Leader (position description # 13531-10)

Assists the project leader in providing direction, supervision, and management for the Complex and Complex staff. Leads Protection Island native prairie restoration program in absence of a term biotech.

Wildlife Biologist (position description # S000346)

Leads the biological program, with a focus on migratory bird resources. Majority of time is spent managing biological programs on refuges other than Dungeness NWR in the Complex.

Visitor Services Manager (position description # S000113)

Leads the visitor services and volunteer programs for the Complex, with the majority of time being spent on recruitment, training, and retention of volunteers.

Maintenance Worker (position description # S000051)

Leads maintenance activities throughout the Complex.

Administrative Support Assistant (position description # S000527) (Vacant)

Provides administrative support for the Complex.

Approved Temporary Positions:**Seasonal Park Ranger (position description # S000122)**

Provides visitor services support on Dungeness NWR. Funded by Recreation Fee funding.

Seasonal Maintenance Worker Helper (position description # S000592)

Assists with maintenance work throughout the Complex. This position is funded by base operations and recreation fee funding.

Seasonal Biological Science Technician (position description #R122032) (Hired: Starting 10/9/22)

Assists with data management for Seabird Surveys primarily on Copalis, Flattery Rocks, and Quillayute Needles NWRs. This position is funded by other Service programs and is specific to this project.

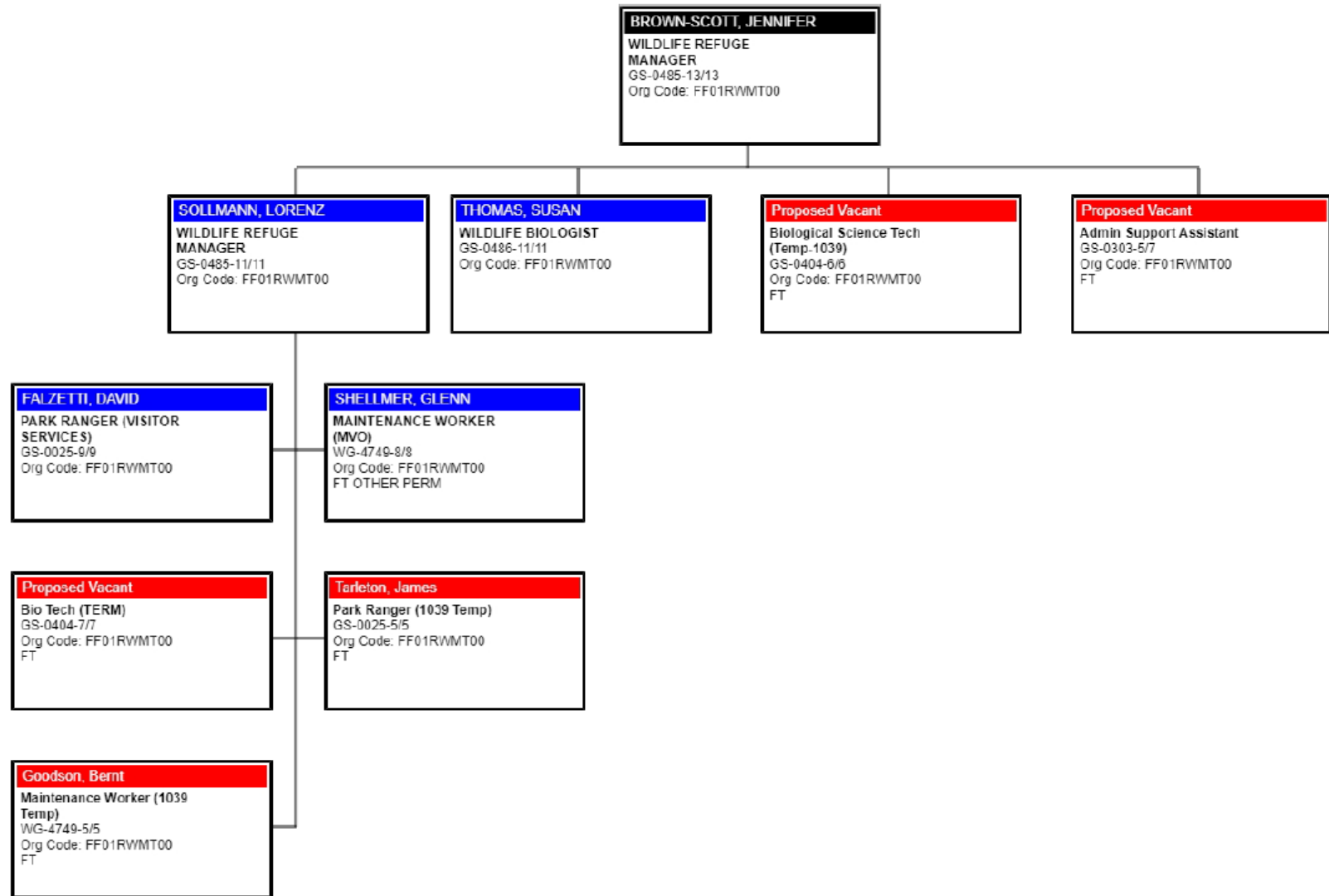
Term Biological Science Technician (position description # S000065) (Vacant)

Leads Prairie Restoration on Protection Island NWR. This position is funded by a grant from another Service program and base allocation funds provided specific to this project.

Figure 1. Washington Maritime Complex Organizational Chart



U.S. Fish & Wildlife Service, Region 1, ASSISTANT DIRECTOR-NATIONAL WILDLIFE REFUGE SYSTEM, Washington Maritime National Wildlife Refuge Complex
 FBMS Code: FF01RWMT00 - SEQUIM, WA; Org Chart Id: 44245



Approving Official: CHRISTINE OGURA Approved Date: 8/11/2022

*TERM Promotion in support of change in supervision

Request C – Current Vacancies

As outlined above, the Complex currently has two vacancies, one permanent position and one term position:

Administrative Support Assistant (position description # S000527) (Vacant)

Provides administrative support for the Complex.

Term Biological Science Technician (position description # S000065) (Vacant)

Leads Prairie Restoration on Protection Island NWR. This position is funded by a grant from another Service program and base allocation funds provided specific to this project.

Request D - Expertise Required to Manage the Refuge

Consistent with the policies of the Office of Personnel Management (OPM), the Department of the Interior, and the Service, position qualifications are defined by OPM qualifications standards and described in official position descriptions. The full position descriptions for all Complex positions are enclosed, along with the associated OPM qualification standards.

Requests E and F - Property

Dungeness NWR consists of property located at the terminus of Voice of America and Holgerson Roads (including Dungeness Spit, Graveyard Spit, and associated uplands), and Dawley Unit located at the terminus of Dawley Road (north and south of US-101) (Figure 2). All properties within Dungeness NWR are managed to support the National Wildlife Refuge System Mission *“to administer a national network of lands and waters for the conservation, management, and where appropriate, restoration of the fish, wildlife, and plant resources and their habitats within the United States for the benefit of present and future generations of Americans”* [National Wildlife Refuge System Administration Act of 1966, as amended (16 U.S.C. 668dd et seq.)] and the Dungeness NWR establishment Purpose *“as a refuge, preserve, and breeding ground for native birds”* [Executive Order 2123 dated 20 January 1915]. Dawley Unit is managed to provide habitat for native wildlife and is not open to public use. Management activities on this property have included, invasive species removal, native habitat restoration, and removal of several unused and derelict structures. Management of Dungeness Spit (and adjacent properties) encourages wildlife dependent recreation while reducing impacts to wildlife and habitat from human disturbance, protects the wildlife habitat through invasive species removal, and provides disturbance free areas for native birds throughout their life history.

A chronological legal history of Dungeness NWR Acquisition and Land Status table, property maps, and Refuge public use map are provided below.

Date	Legal ¹ document or source	Tract #	Tract Name	Acres	FWS Interest	Acquisition Authority	Funding Authority	Action and Management Direction
10/01/1851	S.O. (See P.L.O. 6161 / 47 FR 7235 for ref. to this S.O.)	Applied to lands currently under Tracts 1 and 1b	New Dungeness Lighthouse Reservation	190 (Based on later calculations)	None	N/A	N/A	Withdrew lands for lighthouse purposes
09/22/1866	E.O. (See E.O. 3893 and GLO 1894 for ref. to this 1866 E.O.)	Includes 1a, 1b, and probably includes 1 plus other tracts.	North side of New Dungeness Harbor, embracing all of the peninsula to its junction with the mainland, in T 31 N., R 4W.	458.63 (GLO 1894)	None	N/A	N/A	Reserved and set aside for military purposes lands on the North of New Dungeness Harbor.
01/20/1915	E.O. 2123	1, 1a, and 1b	Dungeness Spit Reservation	226.02	Secondary jurisdiction to lighthouse and military purposes	E.O. 2123	N/A	Established Dungeness Spit Reservation. Order is not intended to abrogate the order creating military reservation located in part upon same lands, rather in addition to such reservation shall insure the protection of the birds therein."
08/13/1923	E.O. 3893	Includes 1a, 1b, and probably includes 1 plus other tracts.	North side of New Dungeness Harbor, embracing all of the peninsula to its junction with the mainland, in T 31 N., R 4W.		Gave FWS primary withdrawal on Tract 1a because the military reservation was removed and there was no lighthouse reservation on that tract.	E.O. 3893	N/A	Certain lands in Washington CA which were reserved for military purposes which are no longer needed for military purposes are put under the control of the Secretary of Interior disposition as provided by the Act of July 1884 (23 Stat. 102) effectively revoke E.O. of 9/22/1866 as many other E.O.
07/25/1940	P.P. 2416 (FR Vol. 5, No. 147 7/30/40)	All Tracts						Changed the name Dungeness Spit Reservation to Dungeness National Wildlife Refuge.

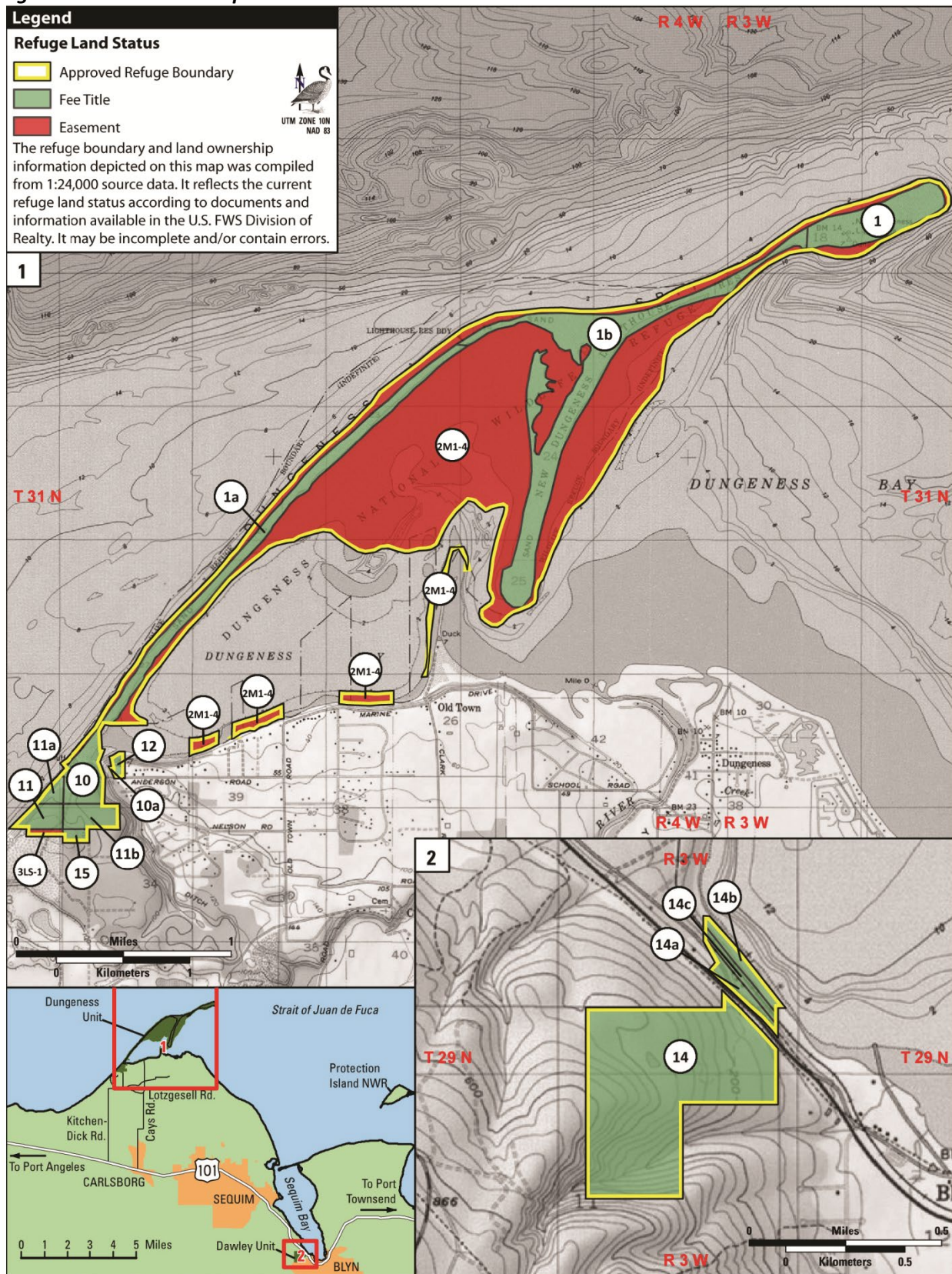
Table 2. Dungeness NWR Chronological Legal History of Acquisitions and Land Status

Date	Legal ¹ document or source	Tract #	Tract Name	Acres	FWS Interest	Acquisition Authority	Funding Authority	Action and Management Direction
08/16/1940	E.O. 8518 (FR Vol. 5, No. 162 8/20/40)	Most of 1b, and possibly part of 1a	T 31 N., R 4W, Sec 13, lots 1-4; Sec 14, lot 1; Sec 24, lots 1-5; Sec 25, lot 5; Sec 26, lot 3	147.5		E.O. 8518	N/A	Modifies E.O. 2123 "... to the extent necessary to permit the Navy Department to have primary jurisdiction over the following-described land for naval purposes..."
05/29/1943	Deed # 18251	2M1-4	State of WA Tidelands	321	Permanent Easement	State of WA Laws of 1927	N/A	Tidelands of the second class were conveyed to the United State of America, U.S. Fish and Wildlife Service, from the State of Washington through a permanent easement on May 29, 1943 for the purpose of <i>"establishing and maintaining on these lands a wildlife refuge."</i>
09/16/1946	(Memo of assistance chief counsel, Chicago, IL. 1946).	2a, 2b, 2c, 2d	State of WA Tidelands	321.47	Permanent Easement		N/A	This memo confirmed the transfer of the tidelands of the second class were conveyed to the United State of America, U.S. Fish and Wildlife Service, from the State of Washington through a permanent easement on May 29, 1943 for the purpose of <i>"establishing and maintaining on these lands a wildlife refuge."</i>
02/09/1955	P.L.O. 1068 (FR 2/16/55)	Most of 1b, and possibly part of 1a	T 31 N., R 4W, Sec 13, lots 1-4; Sec 14, lot 1; Sec 24, lots 1-5; sec 25, lot 5; Sec 26, lot 3	147.5		P.L.O. 1068	N/A	Revoked E.O. 8518 thereby terminating the use by the Navy for naval purposes.
12/17/1970 and 01/29/1971		11, 11a, 11b	Hoagland Upper Forested Area	45.44	Fee	Refuge Recreation Act of 1962	LWCF	Purchased from Mr. and Mrs. Hoagland.

Date	Legal ¹ document or source	Tract #	Tract Name	Acres	FWS Interest	Acquisition Authority	Funding Authority	Action and Management Direction
03/23/1972		10, 10a,	Mellus/ Upper Forested Area	29.18	Fee	Fish and Wildlife Act of 1956	LWCF	Purchase from Mr. Mellus.
03/06/1973 and 01/27/1989		14, 14a, 14b, and 14c	Dawley Tract	128.66	Fee	FWA 1956 and ESA 1973, respectively	N/A	Donation of land from Mr. Dawley <i>“to be administered as a contiguous unit, as a part of the national wildlife refuge system, and as a sanctuary for wildlife.”</i>
02/18/1982	P.L.O. 6161 (FR Vol. 47 No. 33, 2/18/1982) Also see USGS 1976 property disposal map.	All of 1b, and possibly part of 1a	T. 31 N., R. 3W., Sec 18, westerly 2,000 feet of lot 1. T. 31 N., R. 4W., Sec 13, lots 1-4; Sec 14, lot 1; Sec 24, lots 1-5; Sec 25, lot 5; Sec 26, lot 3	157.5	Gives FWS Primary jurisdiction on all of Tracts 1b and 1a.	Special Authorizing Legislation	N/A	Revokes SO of Oct 1, 1851 in part as to lighthouse purposes of 157.50 ac of land. Lands remain withdrawn for Dungeness NWR.
03/08/1988		3LS-1	Clallam County	3.17	Lease	Other	LWCF	Original lease for 20 years for parking lots began.
02/21/1990	Memorandum from Deputy Director Richard M. Smith (USFWS Washington Office) to Regional Director	Part of 1b	Graveyard Spit	173.83	Managers of the RNA	N/A	N/A	Designated Graveyard spit as a Research Natural Area on for its <i>“High quality example of 1) low intertidal, high salinity sandy marsh; 2) coastal spit with native vegetation; and 3) high salinity coastal lagoon.”</i>
03/28/1997	Warranty Deed 754589 and 752629	15	Krier	5.04	Fee	Fish and Wildlife Act 1956	LWCF	Land purchase for new administrative site. Deed signed 3/14/97. Two recordings, second one exempted from Excise tax # 752629
05/19/1999		12	TNC/Weinstein	4.56	Fee	FWA 1956	Other	
04/01/2008		3LS-1	Clallam County	3.17	Lease	FWA 1956	Other	
06/30/2009		3M	Clallam County	3.17	Agreement	FW Coordination Act 1934	Other	

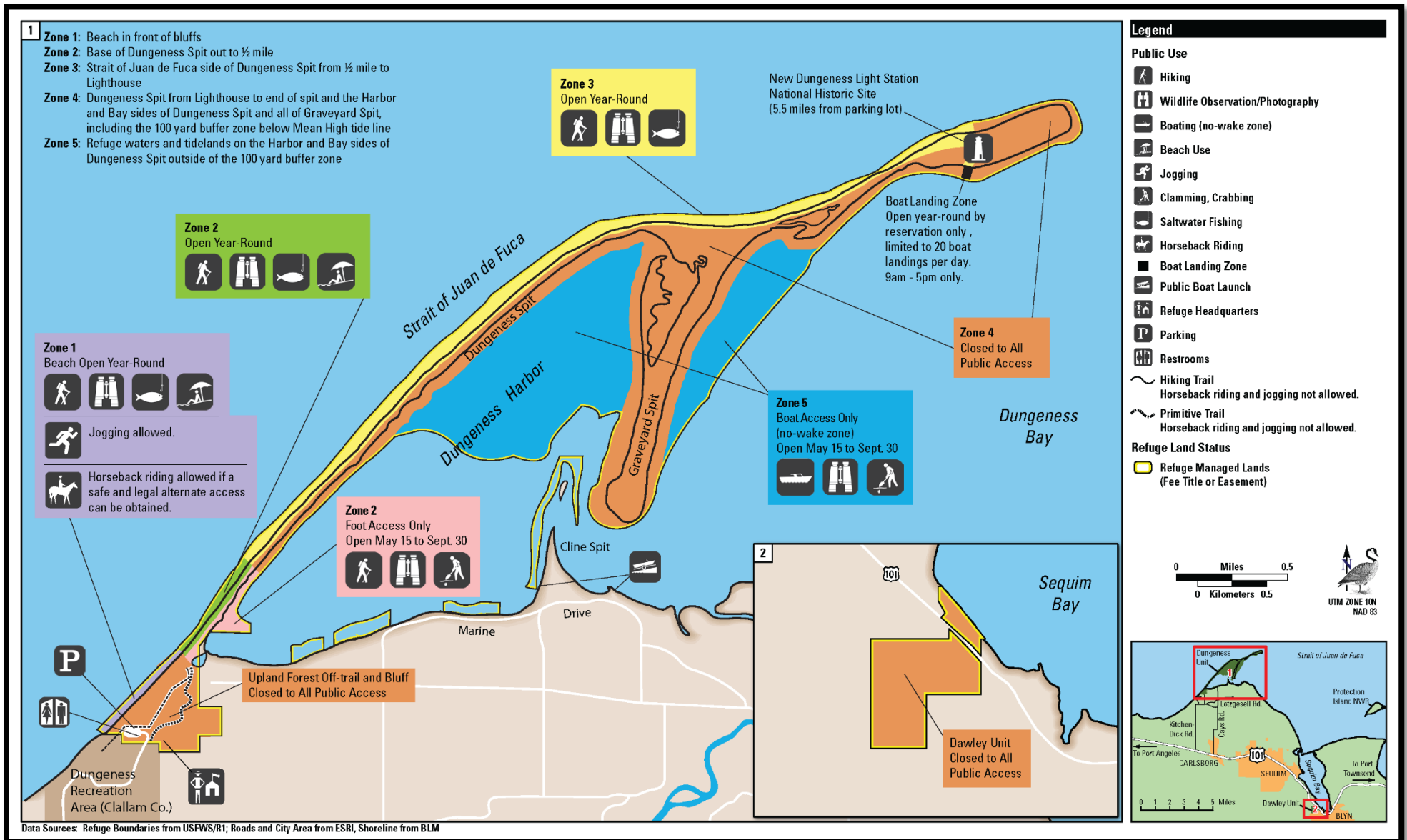
¹S.O. = Secretarial Order; E.O. = Executive Order; P.L.O. = Public Land Order; PP = Presidential Proclamation

Figure 2. Land Status Map



Data Sources: Highways, State and Country Boundaries from ESRI; Cities from USGS; USFWS Ecoregions and Refuge Boundaries from USFWS/R1

Figure 2. Dungeness NWR Public Use Map



Request G - Facilities

Service facilities are prioritized by how critical they are to carrying out the mission, protecting resources, and their substitutability. The most critical assets receive the majority of funding allocated to the refuge for annual maintenance. The Service standard for maintaining assets is to anticipate investing two to four percent of the asset's Current Replacement Value (CRV) into recurring and preventive maintenance annually. This helps assure the critical components of each asset will operate for their expected service life. The provided facilities list represents assets specific to operation of Dungeness NWR, and those that support operation of the Complex as a whole, located at Dungeness NWR (Table 3 and Table 4).

The Service has developed a calculator for each asset type to develop the CRV's using RS Means industry standard costs. The CRV calculator provides an estimate for total replacement of the asset. The CRV's reported on the asset list for Dungeness NWR were last calculated in 2016.

Some critical asset components will need to be replaced when their service life is met. If funding is not available to perform the necessary maintenance or replacement, it becomes deferred maintenance (DM). The provided DM work order list is a report of the current asset deficiencies at Dungeness NWR waiting to be prioritized into a DM project (Table 6). The Service allocates funding to each region annually to address DM and the highest priorities across the region are incorporated into a five-year plan for correction. The work order cost is developed by using historical, and/or RS Means cost data. There are no planned projects for DM funding at Dungeness NWR.

The Service is currently partnering with Clallam County to implement a \$1,640,704 Federal Lands Access Program grant to upgrade the parking area and public restroom facilities used to access Dungeness NWR at the terminus of Voice of America Road. The Service has committed to a \$200,000 grant match for this project.

Table 3. Washington Maritime Complex Assets Located at 715 Holgerson Rd. Sequim, WA

Description		Asset Description	Quantity	Unit Of Measure	Status	Last CCA Date	CRV	Year Built
1	BLDG MULTI-PURPOSE, COMPLEX OFFICE/STORAGE	Building Multi-Purpose	3,200.00	SQFT	OPERATING	10/18/21	\$1,151,343	2009
2	BLDG MAINT SHOP, COMPLEX SHOP/EQUIPMENT STORAGE BUILDING	Building Service Shop Maintenance	3,600.00	SQFT	OPERATING	10/18/21	\$821,277	2009
3	BLDG WH EQUIP VEHICLE, EQUIPMENT STORAGE BUILDING	Building Warehouse Equip Vehicle	2,220.00	SQFT	OPERATING	10/18/21	\$497,692	2009
4	BLDG QTRS #42, MOBILE HOME WREN	Building Mobile Home	378.00	SQFT	OPERATING	10/18/21	\$229,074	2016
5	BLDG QTRS #43, MOBLE HOME BRANT	Building Mobile Home	385.00	SQFT	OPERATING	10/18/21	\$229,073	2016
6	RT#403, SHOP ACCESS RD	Road Paved	0.08	LNMI	OPERATING	4/12/18	\$128,792	2009
7	WATER DIST PROD, DOMESTIC WATER SYSTEM (1" DIAMETER)	Water Distribution System	1,080.00	LNFT	OPERATING	10/18/21	\$130,506	2009
8	RT#800, DUNGENESS MAINTENANCE PKG	Parking Lot	1,889.33	SQYD	OPERATING	4/12/18	\$22,441	2009
9	WASTEWATER SYSTEM, ON-SITE WASTEWATER TREATMENT/DISPOSAL	Wastewater Collection System	370.00	LNFT	OPERATING	10/18/21	\$1,700,328	2009
10	UTILITY SYS, UNDERGROUND UTILITIES (15 KV UG PWR C	Utility System	10.00	EACH	OPERATING	10/18/21	\$283,897	2009

*Numbered structures are identified in Figure 4.

Table 4. Dungeness NWR Real Property Assets

Description		Asset Description	Quantity	Unit Of Measure	Status	Last CCA Date	CRV	Year Built
11	RT#902, SMNSO DUNGENESS ADA PKG	Parking Lot	44.56	SQYD	OPERATING	4/12/18	\$25,406	2009
	RT#901, SMNSO DUNGENESS OVERFLOW PKG	Parking Lot	966.44	SQYD	OPERATING	4/12/18	\$176,417	1988
12	RT#900, SMNSO DUNGENESS MAIN PKG	Parking Lot	1,889.33	SQYD	OPERATING	4/12/18	\$1,020,785	1971
13	BLDG, RESTROOM, SMN SO BLDG COMFORT STATION, CINDERBLOCK	Building Comfort Station/Restroom	440.00	SQFT	OPERATING	10/18/21	\$370,039	2009
14	KIOSK, DUNGENESS SPIT TRAILHEAD	Kiosk	2.00	EACH	OPERATING	10/18/21	\$231,853	2011
15	RT#T001, HEADQUARTERS WALKWAY (4'-8" WIDE BY 270'	Trail Paved	1.00	EACH	OPERATING	10/18/21	\$65,790	2009
16	RT#T400, PEOPLE TRAIL	Trail Unpaved	1.00	EACH	OPERATING	10/18/21	\$161,480	2001
17	RT#T401, PRIMITIVE HORSE TRAIL	Trail Unpaved	1.00	EACH	OPERATING	10/18/21	\$40,307	1976
18	OBSERVATION TOWER, VIEWING DECK S- 1300 SQ FT (2)	Observation Deck Tower/Platform	2.00	EACH	OPERATING	10/18/21	\$1,195,116	1997
19	WATER WELL POTABLE, WELL FOR MELLUS CABIN	Water Well	1.00	EACH	OPERATING	10/18/21	\$11,949	1973
20	BLDG WH SHED, STORAGE SHED	Building Warehouse Shed/Outbuilding	400.00	SQFT	OPERATING	10/18/21	\$97,243	1992

21	RT#404, W ANDERSON ACCESS RD	Road Gravel	0.25	LNMI	OPERATING		\$72,672	1972
	FENCE BOUNDARY	Fencing	4,970.00	LNFT	OPERATING	10/18/21	\$263,229	1990
	SIGNS	Sign	25.00	EACH	OPERATING	10/18/21	\$100,415	1982
	FENCE, WOOD FENCES	Fencing	5,905.00	LNFT	OPERATING	10/18/21	\$306,268	2009
	FENCE, SPLIT RAIL FENCING (CEDAR, DOUBLE RAIL)	Fencing	935.00	LNFT	OPERATING	10/18/21	\$43,038	2009
	SIGNS, PILING BOUNDARY MARKERS	Sign	32.00	EACH	OPERATING	10/18/21	\$445,658	1994
D	WATER WILDLIFE, DAWLEY PROPERTY PONDS NORTH OF HIGHWAY	Wildlife Water Production Systems	1.00	EACH	OPERATING	10/18/21	\$36,591	1973
D	BLDG WH SHED, DAWLEY PROPERTY STONE SHED	Building Warehouse Shed/Outbuilding	288.00	SQFT	OPERATING	10/18/21	\$70,015	1939
D	BLDG QTRS#000, BLDG HSNG SINGLE FAMILY, DAWLEY PROPERTY	Building Single Family Housing	900.00	SQFT	OPERATING	10/18/21	\$342,859	1964
D	BLDG WH EQUIP VEHICLE, DAWLEY PROPERTY METAL GARAGE	Building Warehouse Equip Vehicle	1,221.00	SQFT	OPERATING	10/18/21	\$226,386	1990
D	BLDG WH SHED, DAWLEY PROPERTY SHED SE OF GARAGE	Building Warehouse Shed/Outbuilding	729.00	SQFT	OPERATING	10/18/21	\$175,038	1930
D	BLDG QTRS#100, BLDG HSNG SINGLE FAMILY, DAWLEY PROPERTY	Building Single Family Housing	4,393.00	SQFT	OPERATING	10/18/21	\$1,047,361	1935
D	WATER WILDLIFE, DAWLEY PROPERTY LARGE POND SOUTH	Wildlife Water Production Systems	1.00	EACH	OPERATING	10/18/21	\$39,888	1973
D	BLDG WH SHED, DAWLEY PROPERTY SHED AND AVIARY SE	Building Warehouse Shed/Outbuilding	990.00	SQFT	OPERATING	10/18/21	\$158,297	1965
D	SAO, DAWLEY PROPERTY PENTAGONAL AND RECTANGULAR AVIARY	Structure All Other	2.00	EACH	OPERATING	10/18/21	\$282,906	1975
D	BLDG WH SHED, DAWLEY PROPERTY LOWER SHED AND AVIARY	Building Warehouse Shed/Outbuilding	227.00	SQFT	OPERATING	10/18/21	\$55,185	1963
D	LEVEE, DAWLEY PONDS	Levee	300.00	LNFT	OPERATING	10/18/21	\$143,005	1935
	WATER DIST PROD, DAWLEY PROPERTY WATER DISTRIBUTION	Water Distribution System	2,640.00	LNFT	OPERATING	10/18/21	\$171,780	1964
	RT#401, DAWLEY DRIVEWAY	Road Paved	0.07	LNMI	OPERATING		\$80,138	1973
	FENCE, DAWLEY PROPERTY FENCES	Fencing	1,475.00	LNFT	OPERATING	10/18/21	\$57,491	1975
	RT#400, DAWLEY NORTH ACCESS RD	Road Paved	0.12	LNMI	OPERATING	4/12/18	\$3,877,605	1935
	RT#402ZZ, DAWLEY SOUTH ACCESS RDS	Road Dirt	1.00	LNMI	OPERATING	4/12/18	\$460,885	1964

*Numbered structures are identified on Figure 4. Structures labeled with a D are found in Table 5 and Figure 5.

Figure 3. WA Maritime NWRC and Dungeness NWR Assets

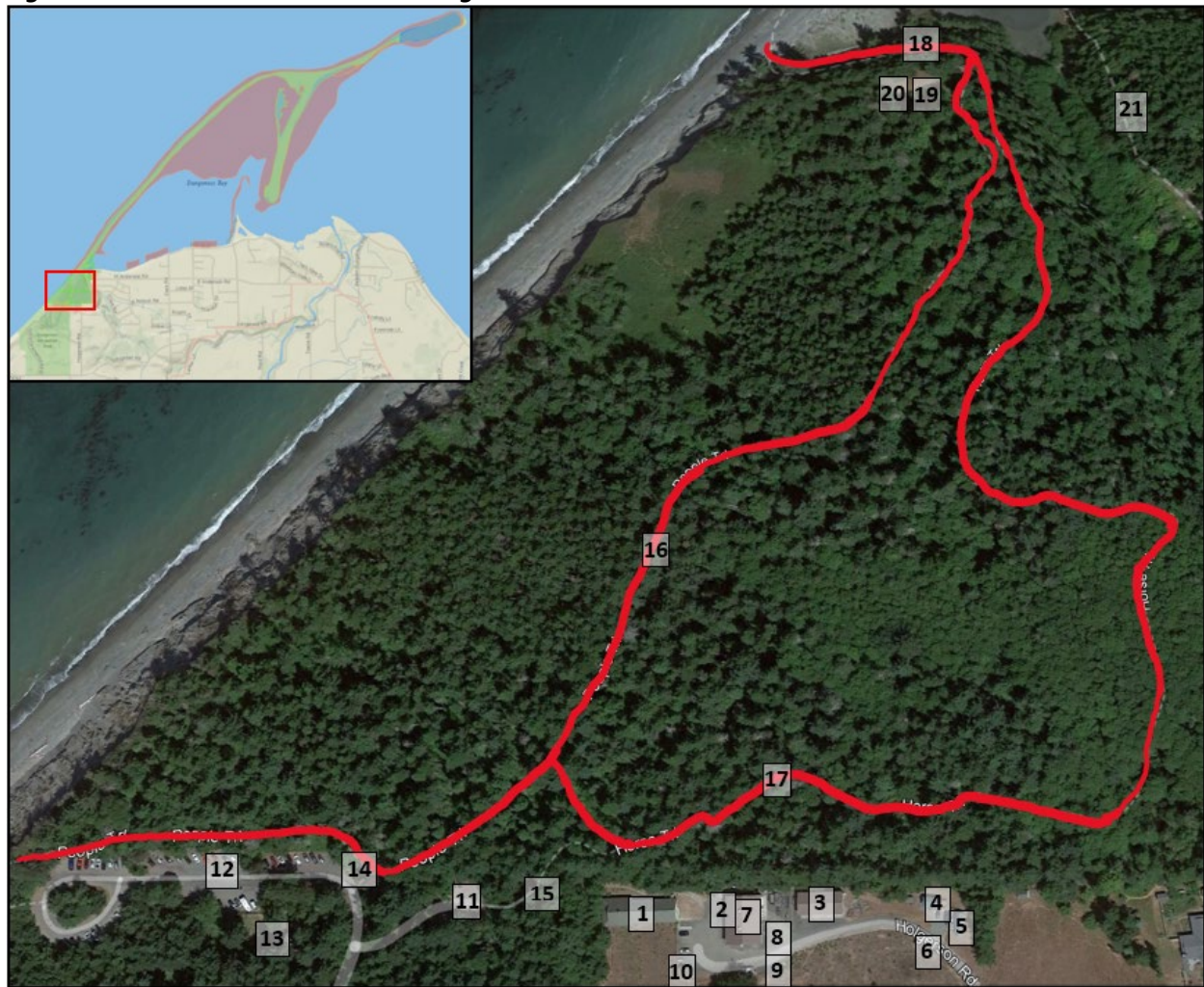
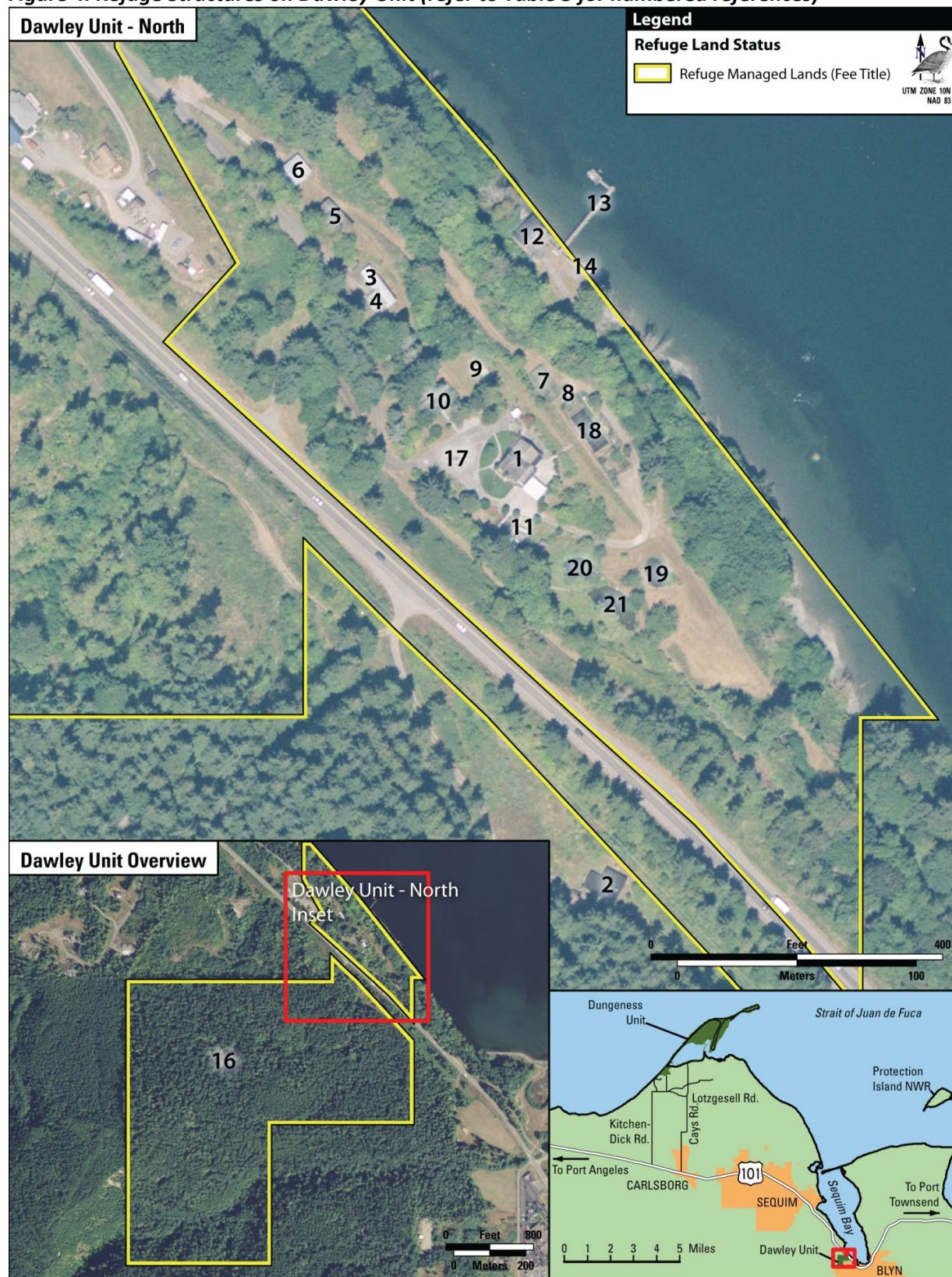


Table 5. Refuge Structures on Dawley Unit (refer to Figure 5 for locations)

	Structure	Size (sq. ft.)	Septic System	Year Built	Removed	Tract
1	Main residence	4,393	yes	1935		North
2	Old rental house	896	yes	1964		South
3	Mobile home &	808	yes	1974	x	North
4	small shed		no			
5	Large shed	720	no	1930		North
6	Metal garage	1090	no	1990		North
7	Aviary shed	990	no	1965	x	North
8	Small aviary	227	no	1963	*	North
9	Pentagon aviary	16	no	1975	*	North
10	Rectangle aviary	1200	no	1975	*	North
11	Stone shed	288	no	1939		North
12	Beach house	1024	yes	1960	x	North
13	Wood dock	59.44		1952	x	North
14	Concrete bulkhead				x	
15	Pole barn	Unknown	no	1964	x	South
16	Impoundment	Large		1964		South
17	Brick "well"	Very small				North
18	Concrete pond	Small			x	North
19	"Natural" pond 1					North
20	"Natural" pond 2					North
21	"Natural" pond 3					North

*Above ground structures removed. Concrete foundations remain.

Figure 4. Refuge Structures on Dawley Unit (refer to Table 5 for numbered references)



Data Sources: Highways, State and Country Boundaries from ESRI; Cities from USGS; USFWS Refuge Boundaries from USFWS/R1; Imagery from 2009 NAIP and 2003 WSDOT

Table 6. Dungeness NWR Deferred Maintenance Work Order List

Project Description	Planned Year	Cost	Location Description
Rehabilitate Trail	0	\$500,000	RT#T400, PEOPLE TRAIL
Demolish Dawley Property main residence DNG DM no SWT	0	\$89,500	BLDG QTRS#100, BLDG HSNG SINGLE FAMILY, DAWLEY PROPERTY
Demolish 4,393 Square Foot Dawley Property Septic	2021	\$34,316	BLDG QTRS#100, BLDG HSNG SINGLE FAMILY, DAWLEY PROPERTY
Remove 4,393 Sq Ft Dawley Property Main Residence	0	\$123,816	BLDG QTRS#100, BLDG HSNG SINGLE FAMILY, DAWLEY PROPERTY
Remove Hazardous Materials from Dawley Main House	0	0	BLDG QTRS#100, BLDG HSNG SINGLE FAMILY, DAWLEY PROPERTY
Remove 1475-foot chain link fences - Dawley DNG DMDE	0	\$31,588	FENCE, DAWLEY PROPERTY FENCES
Remove 896 sq ft Dawley Rental House DNG DMDE	0	\$31,900	BLDG QTRS#000, BLDG HSNG SINGLE FAMILY, DAWLEY PROPERTY
Remove 896 Sq Ft Dawley Rental House and Septic System	0	\$31,900	BLDG QTRS#000, BLDG HSNG SINGLE FAMILY, DAWLEY PROPERTY
Construct Restroom Dungeness FLAP	0	0	BUILDING COMFORT STATION RESTROOM AUC

Request K - Agreements

- Memorandum of Understanding for Washington Maritime NWRC operation and maintenance of the Clallam County-owned parking areas and restroom at the terminus of Voice of America Road. The Complex currently pays \$1,860 for lease of these facilities and is responsible for their maintenance.
- Memorandum of Understanding between the Service and the Sequim-Dungeness Museum for conservation and exhibition of a Native American canoe recovered from Graveyard Spit in 1980. The canoe was transferred to Jamestown S’Klallam Tribe on September 4, 1994, through an agreement with the Sequim Museum and Arts Center.
- Letter of Agreement between the Service and the Jamestown S’Klallam Tribe, Lower Elwha Klallam Tribe, and the Port Gamble S’Klallam Tribe for “Management of the Tribal Fishery on Dungeness National Wildlife Refuge.”
- The New Dungeness Light Station Association maintains and operates the New Dungeness Light Station under an agreement with the U.S. Coast Guard.