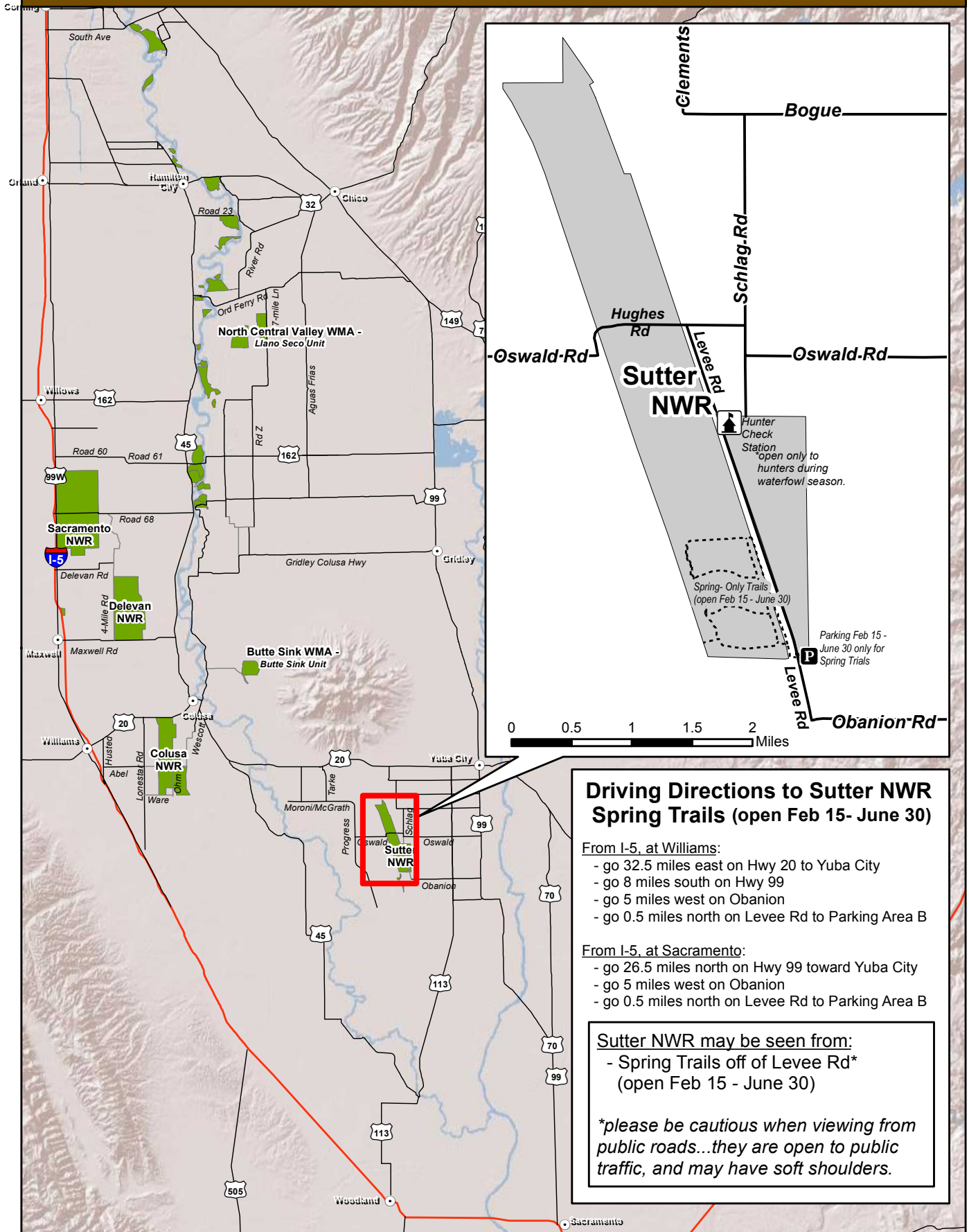


SPRING TRAILS DIRECTIONS - Sutter National Wildlife Refuge



Driving Directions to Sutter NWR Spring Trails (open Feb 15- June 30)

From I-5, at Williams:

- go 32.5 miles east on Hwy 20 to Yuba City
- go 8 miles south on Hwy 99
- go 5 miles west on Obanion
- go 0.5 miles north on Levee Rd to Parking Area B

From I-5, at Sacramento:

- go 26.5 miles north on Hwy 99 toward Yuba City
- go 5 miles west on Obanion
- go 0.5 miles north on Levee Rd to Parking Area B

Sutter NWR may be seen from:

- Spring Trails off of Levee Rd* (open Feb 15 - June 30)

**please be cautious when viewing from public roads...they are open to public traffic, and may have soft shoulders.*

