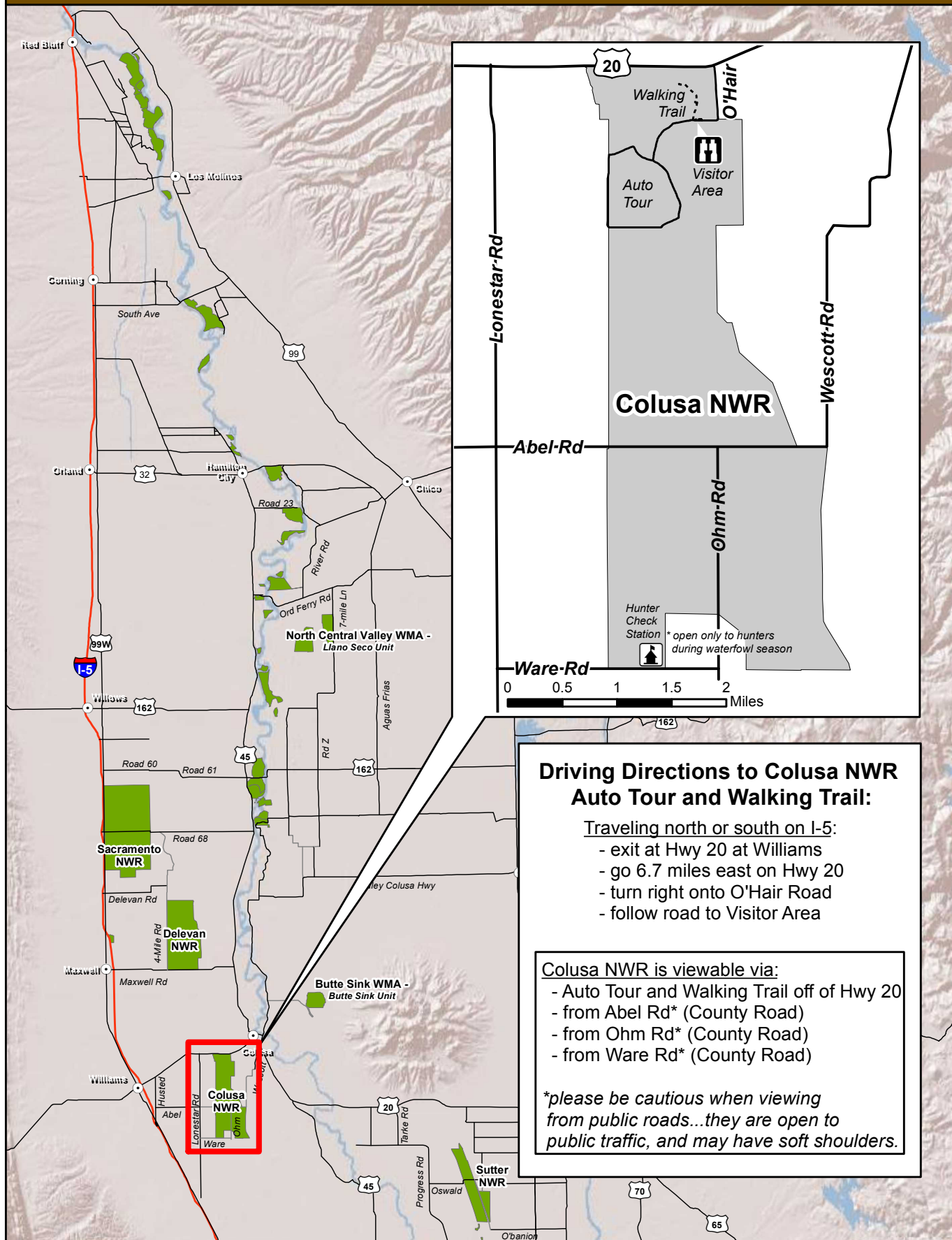


VISITOR AREA DIRECTIONS - Sacramento National Wildlife Refuge



Driving Directions to Colusa NWR Auto Tour and Walking Trail:

Traveling north or south on I-5:

- exit at Hwy 20 at Williams
- go 6.7 miles east on Hwy 20
- turn right onto O'Hair Road
- follow road to Visitor Area

Colusa NWR is viewable via:

- Auto Tour and Walking Trail off of Hwy 20
- from Abel Rd* (County Road)
- from Ohm Rd* (County Road)
- from Ware Rd* (County Road)

**please be cautious when viewing from public roads...they are open to public traffic, and may have soft shoulders.*

